

#1
Gauge

VICTORIAN

TRAIN STATION

INSTRUCTION MANUAL
ART-7100-01



ARISTO-CRAFT TRAINS

INTRODUCTION

Dear Model Railroader:

Should you have any questions about operations, proper usage, or maintenance required on ARISTO-CRAFT TRAINS #1 GAUGE 1/29th Scale Model Railroad products, please contact us at the following address:

ARISTO-CRAFT TRAINS	PHONE: 973-351-9800
698 SOUTH 21ST STREET	FAX: 973-351-9700
IRVINGTON, NJ 07111	EMAIL: aristo@mindspring.com
	www.aristocraft.com

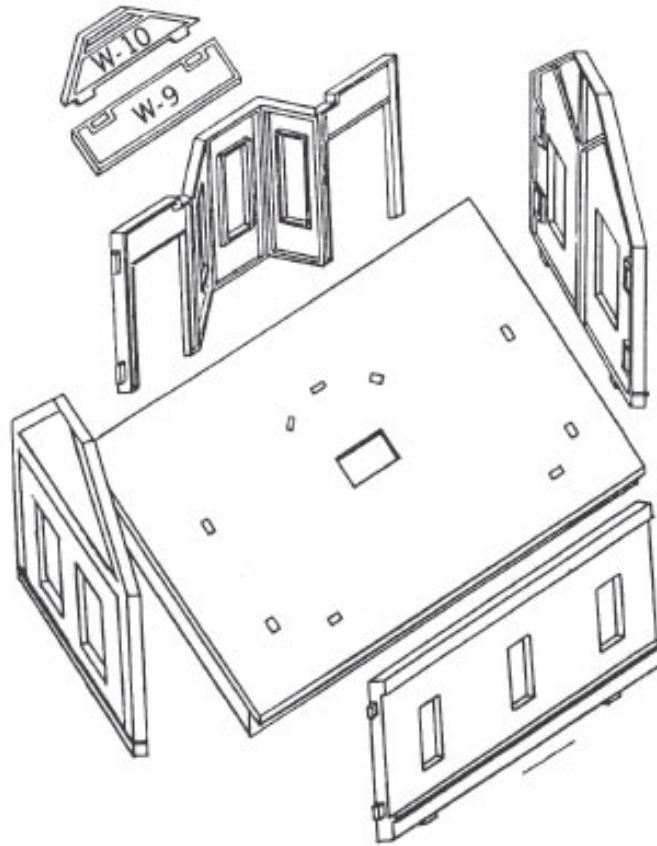
The following instructions are intended to help you understand and operate all the features built into this product.

Good Railroading!!!!

ASSEMBLY INSTRUCTION

(1) Required before assembly Liquid plastic cement or super-glue

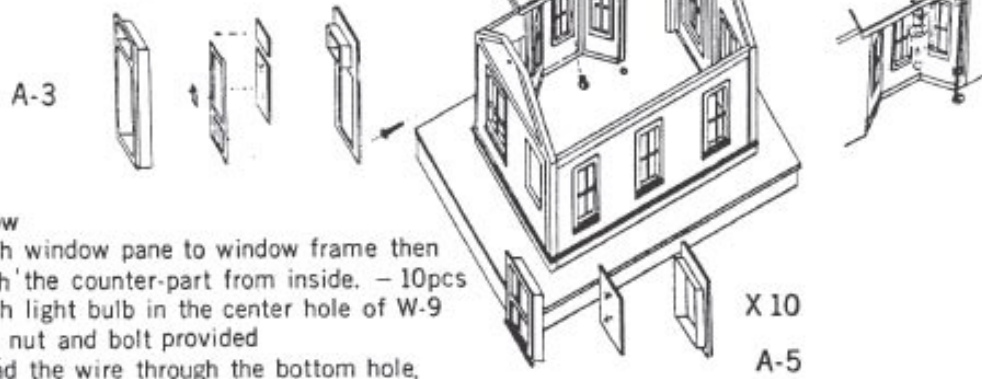
(2) Wall & Bottom assembly



Insert wall parts onto the bottom plate grooves.
Fix W-9, W-10 together and attach on top of front window.

(3) Door & Window assembly

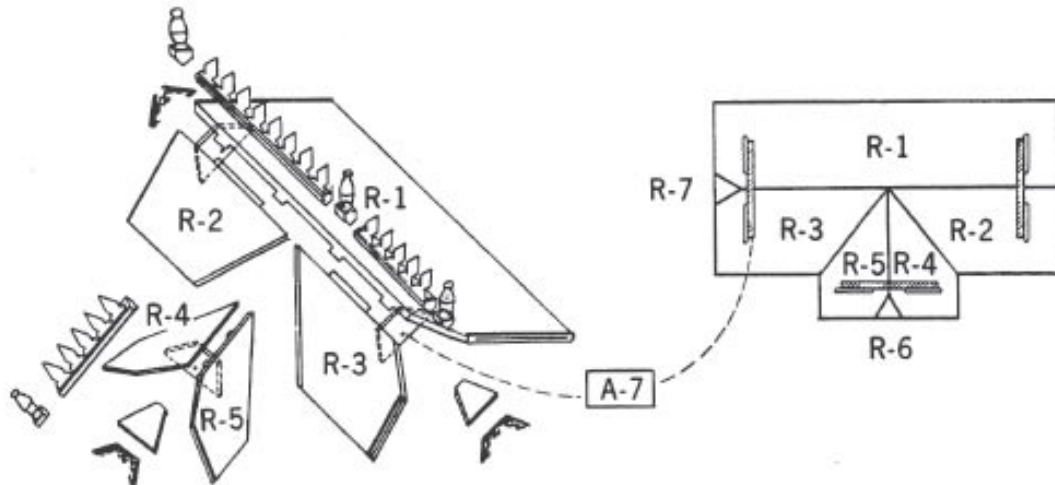
- 3-1. Attach door-knob decoration (brass) on the door.
($1\frac{1}{2}$ " from the bottom) – 3 pcs
- 3-2. Front gate with 2 swing doors should be inserted from the outside and rear gate with windows be inserted from the inside, then glued.
Try the doors several times to check smooth opening and closing.



- 3-3 Window
Attach window pane to window frame then attach the counter-part from inside. – 10pcs
- 3-4. Attach light bulb in the center hole of W-9 using nut and bolt provided
Thread the wire through the bottom hole.

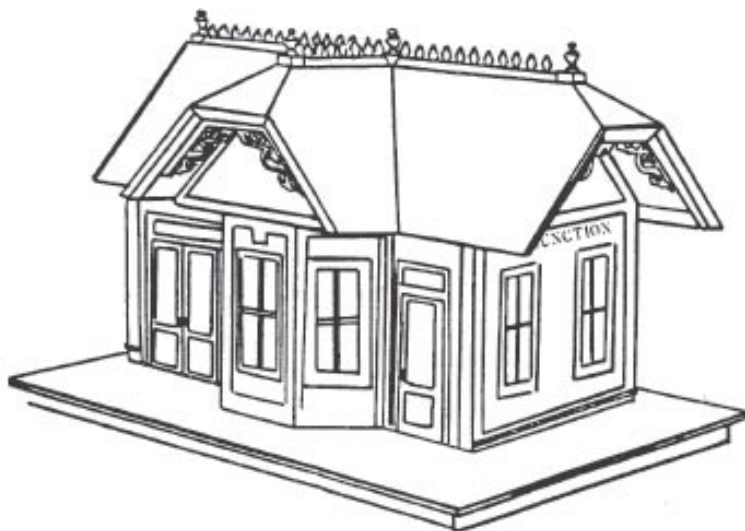
(4) Roof assembly

- 4-1. Attach R-2, R-3, in R-1, then fix 2 A-7 ladder shaped supports.
- 4-2. Attach R-4 to R-5 then fix A-7.
- 4-3. Attach 4-2 to 4-1.
- 4-4. Attach R-6, R-7, then roof decorations.



(5) Final assembly

- 5-1. Place the entire roof assembly on the wall and attach screws on both sides.
- 5-2. Attach the station decals.



SERVICE:

Should your ARISTO-CRAFT TRAINS model railroad product require warranty service, be sure to take the following steps to assure proper servicing:

1. Return product in ORIGINAL BOX, if not possible to use original box, pack product carefully in corrugated cardboard box, FULLY INSURED and PREPAID. ARISTO-CRAFT TRAINS will not be responsible for any damage or loss incurred during shipping.

2. Include a brief but thorough explanation of the problem(s) and the servicing that may be required.

3. Be sure to include your name, street address, city, state (or province), country (if outside U.S.A.), and postal zip code along with daytime phone number including Area Code, so that you may be contacted if it becomes necessary. All identification MUST be both - INSIDE package, enclosed in letter and - OUTSIDE package, on shipping container.

4. Include proper payment for shipping/handling - Locomotive or Complete Train Set.....\$20.00 US

Accessories: switch, track, individual freight passenger railcars, etc. \$10.00 US

CALL FOR CURRENT SHIPPING COSTS

- with check/Money Order payable in US dollars \$ to : Polk's Hobbies. Please DO NOT SEND CASH. If your item is out of warranty, you will be contacted with the proper amount of repair costs before repairs are started.

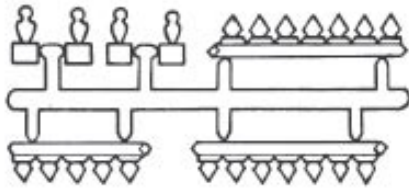
*** C.O.D. shipping NOT included, additional cost.***

5. Ship your item(s) to:

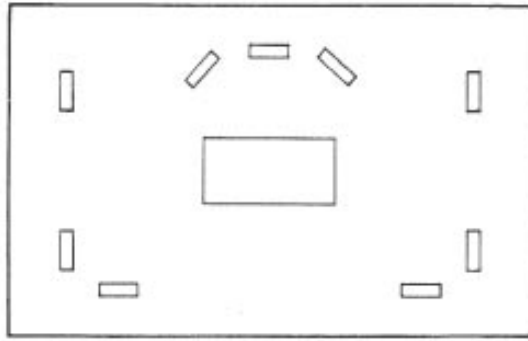
ARISTO-CRAFT TRAINS
698 SOUTH 21ST STREET
IRVINGTON, NJ 07111

PHONE: 973-351-9800
FAX: 973-351-9700
EMAIL: aristo@mindspring.com
www.aristocraft.com

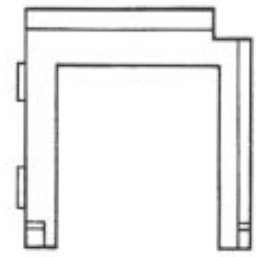
Note: Immediate written confirmation of receipt of returned item(s) will be sent along with estimated repair time by ARISTO-CRAFT TRAINS Service/Repair department.



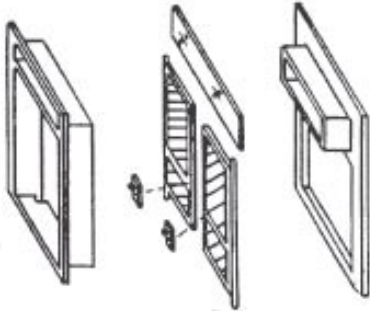
A-1



R-1



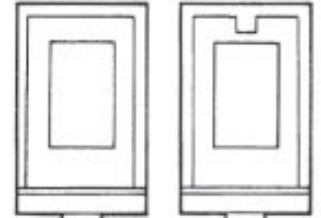
W-1



A-2

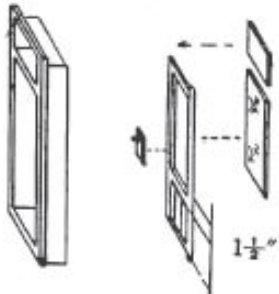


R-2

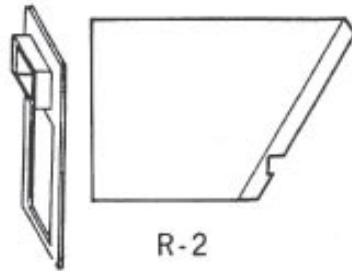


W-2

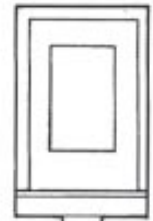
W-3



A-3



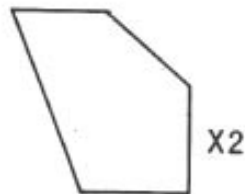
R-3



W-4



A-4



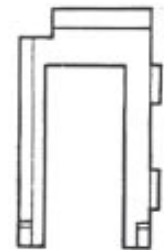
R-4 (R-5)



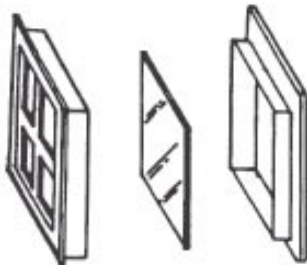
R-6



R-7

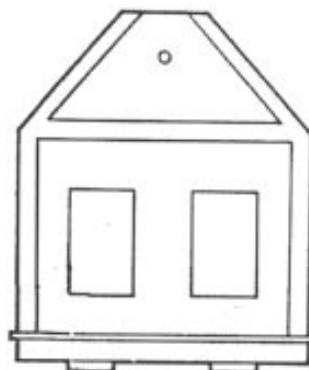


W-5



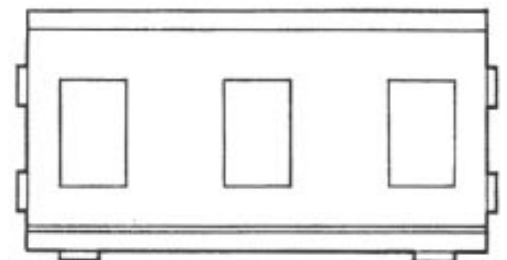
(A-5)

X10

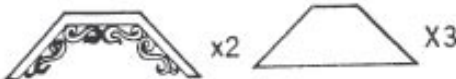


W-6 (W-8)

X2

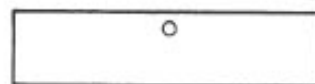


W-7

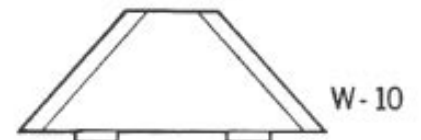


A-6

A-7



W-9



W-10