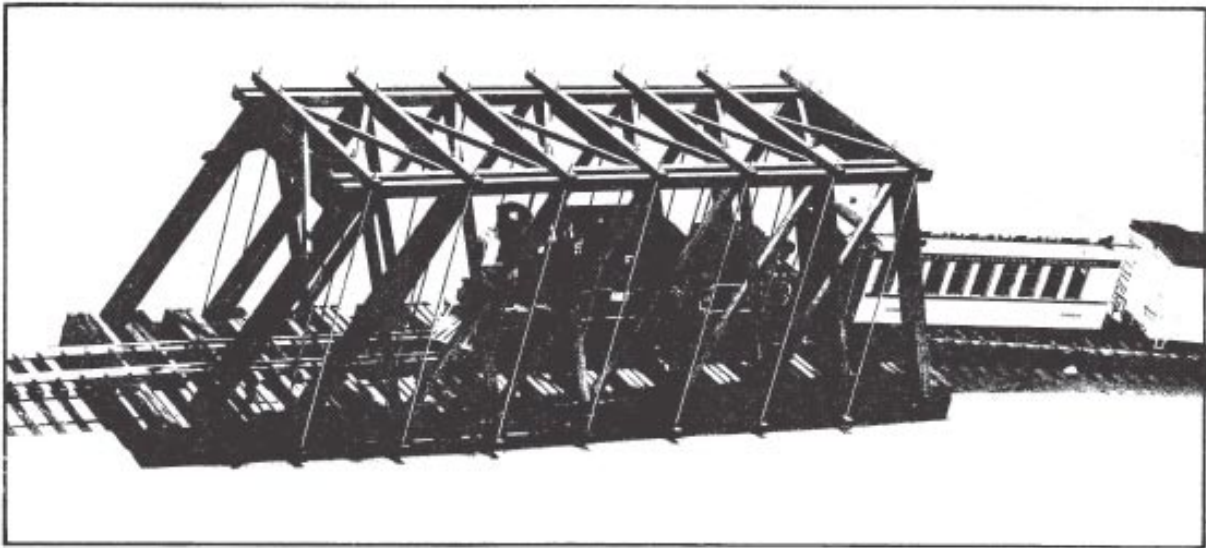


TRUSS BRIDGE

An American Classic

ASSEMBLY MANUAL



STYLE #7102 TRUSS BRIDGE

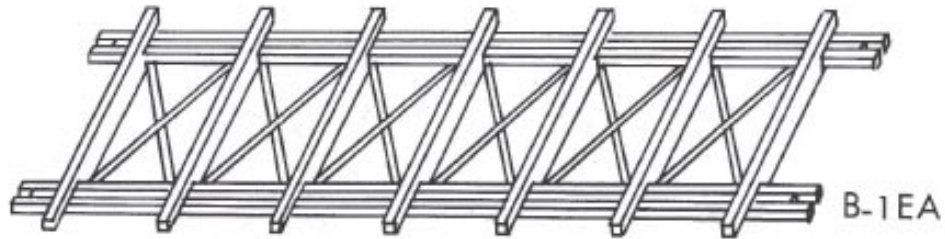
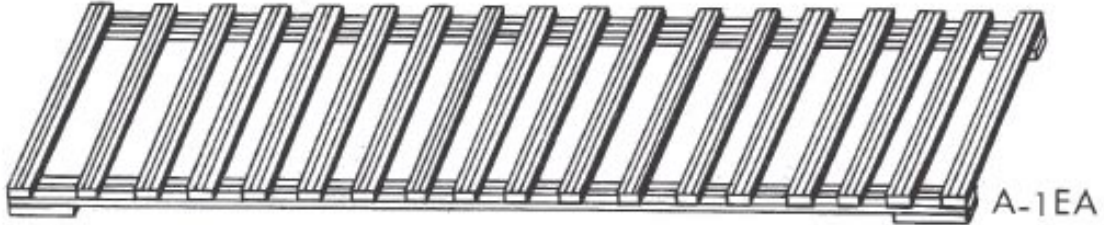
ARISTO-CRAFT TRAINS
698 SOUTH 21ST STREET
IRVINGTON, NJ 07111

PHONE: 973-351-9800
FAX: 973-351-9700
EMAIL: aristo@mindspring.com
www.aristocraft.com

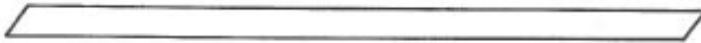
ASSEMBLY INSTRUCTION

1. REQUIRED BEFORE ASSEMBLY (WOOD GLUE)

2. LIST OF PARTS



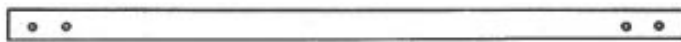
D-8EA+1 (SPARE)



E-16EA



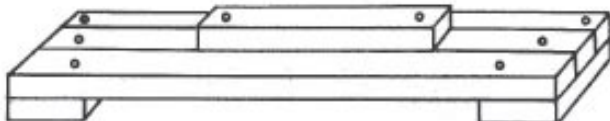
F-4EA



G-7EA



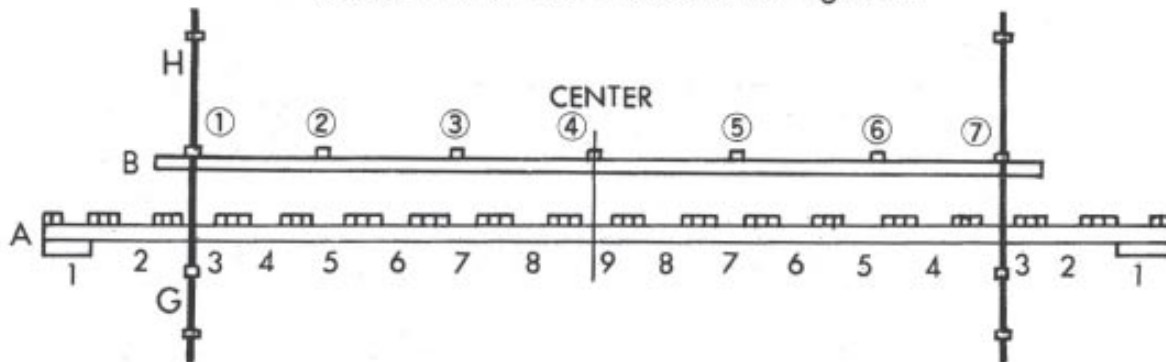
H-28EA



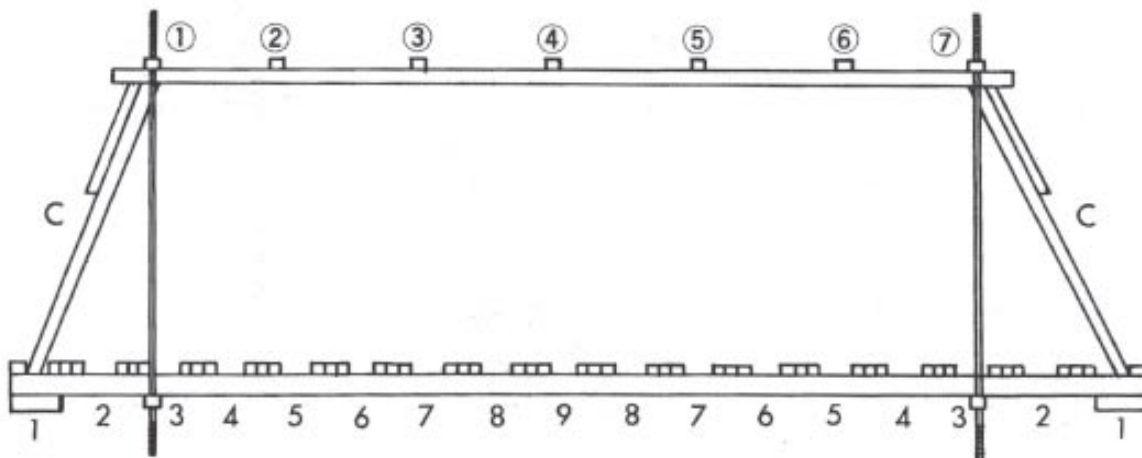
I-4EA

3. ASSEMBLY

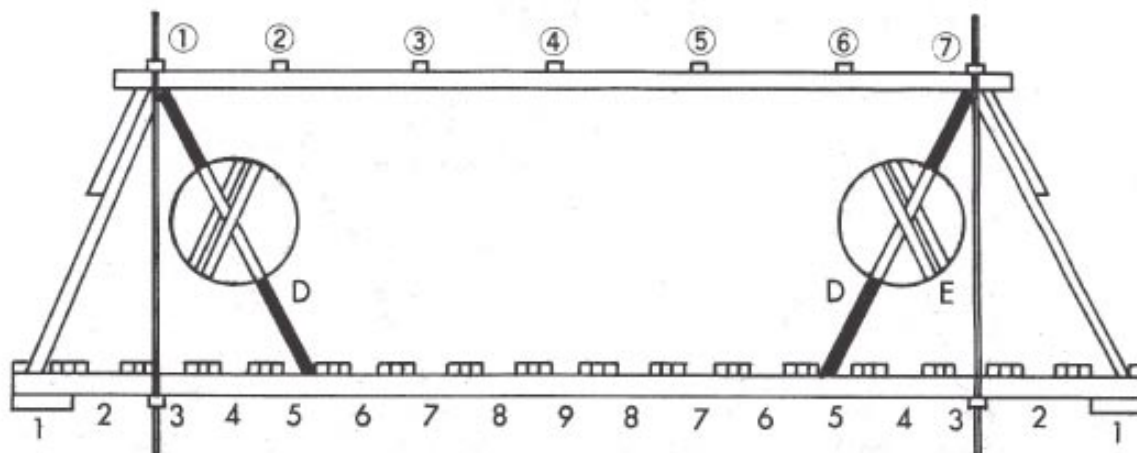
- (Fig 1)** 1. Place (B) on top of (A) in the center.
2. Thread 2 pieces of (G) and 8 as picture and put washers and nuts in but do not tighten.



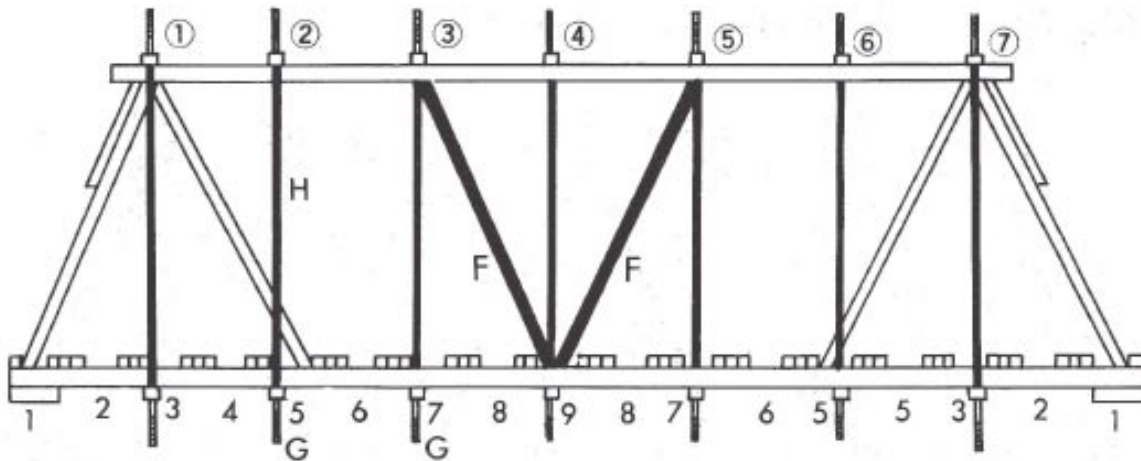
- (Fig 2)** Place (C) on side and then tighten screws on 8 (H).



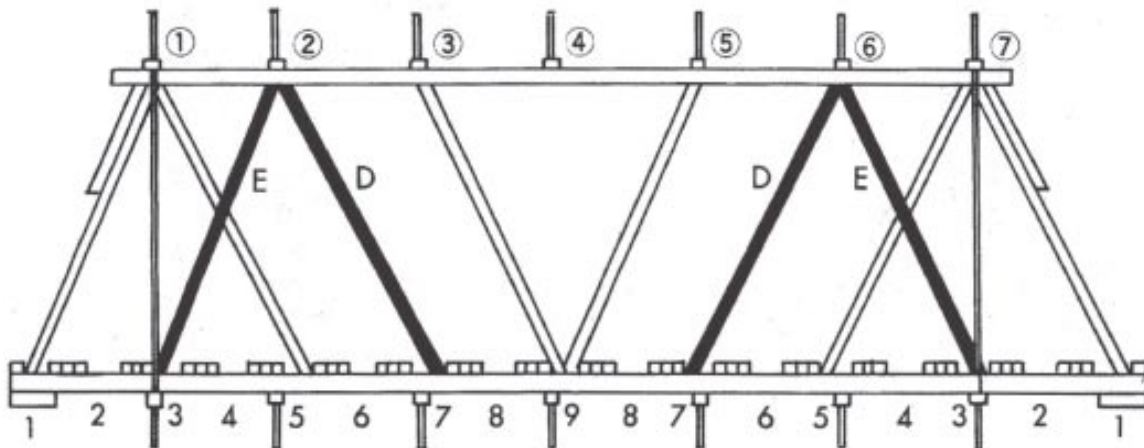
- (Fig 3)** Place 4 pieces of (D) and glue.



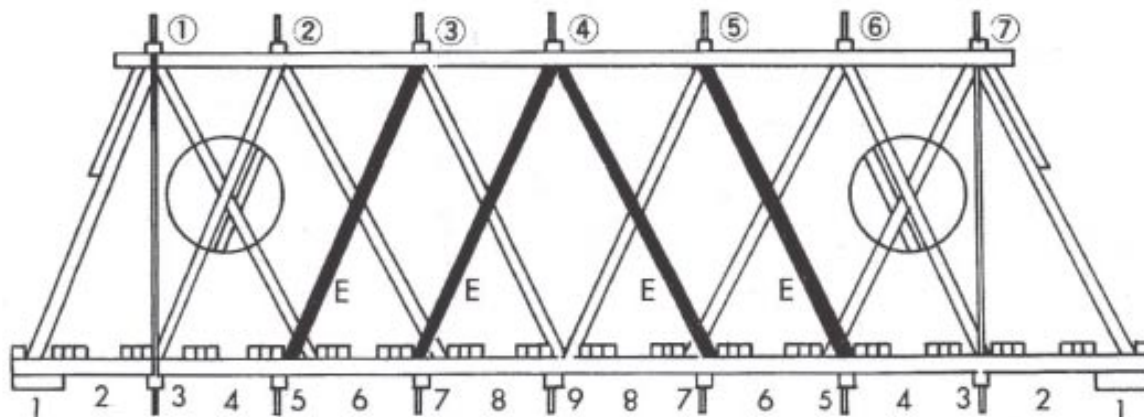
- (Fig 4)** 1. Thread 4 pieces of (F) and glue.
 2. Thread 20 pieces of (H) in 5 (G) and put nuts & washers in but do not tighten.



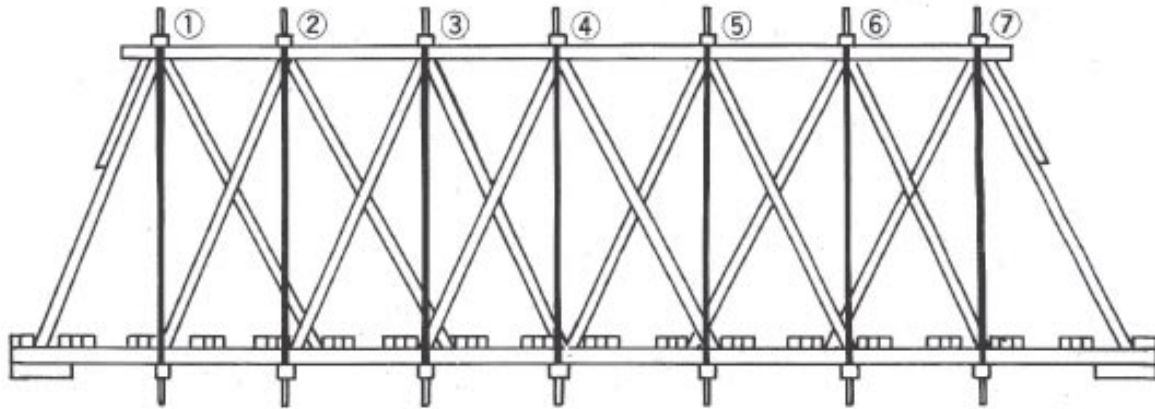
- (Fig 5)** 1. Place 4 pieces of (D) then glue.
 2. Place 8 pieces of (E) then glue.



- (Fig 6)** Place 8 pieces of (E) then glue.



(Fig 7) After adjusting the height, tighten screws on 20 (H), then glue.



[NOTE] The 4ea of (I) was provided to adjust height difference between the track and the truss bridge, so use them as they suit you.

ARISTO-CRAFT TRAINS
698 SOUTH 21ST STREET
IRVINGTON, NJ 07111

PHONE: 973-351-9800
FAX: 973-351-9700
EMAIL: aristo@mindspring.com
www.aristocraft.com