

GENERAL PURPOSE TRACK INSTRUCTIONS

1. All ARISTO-CRAFT curved and straight track sections have two (2) screws in the bottom which secure the rail to the ties. In order to convert an ordinary section of track into a "Terminal Track" which conducts electric power to the rails, merely remove both screws at one end, insert the screws through the eyes of the TRACK TO PACK CONNECTOR WIRE and reattach the screws (See Fig. 1).
2. Join all twelve (12) curved track sections together (Fig. 2) ~~to form a circle~~. If desired, each may be permanently attached to the adjoining section by inserting the small locking screw through the slot in the rail joiner into the hole in the rail and tightened (Fig. 3). These screws are stored underneath, in the hollow of one of the ties and encased in paraffin. If you do not wish to permanently join the track at this time, do not use the locking screws, but secure the sections together by using the provided plastic Tie Wraps. These Tie Wraps are inserted through the slot in the last tie and tightened. Please note that

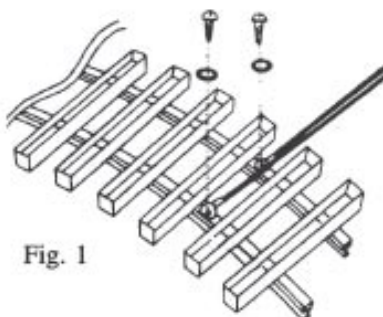


Fig. 1



Fig. 2

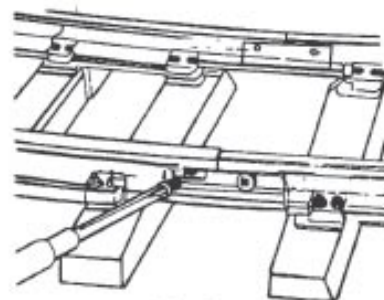


Fig. 3

there is a notch on the bottom of this tie into which the Tie Wrap lies so that the track will lie flat (Fig.4).

- *3. Connect the TRACK TO PACK CONNECTOR WIRE leads to the two (2) DC terminals at the back of the power pack by depressing the thumb tab at the bottom of the terminal and slipping the bare portion of the wire into the hole above the thumb tab. Insert one wire in each of the DC terminals. It does not matter which wire is connected to either terminal.
4. Place the locomotive and cars on the track and couple them together. Each of the knuckle couplers may be opened by pressing up on the small tab under the coupler. To lock the couplers, simply push them together.
- *5. Finally plug the power pack into any standard 120 V wall outlet. A green light will come on indicating that you have power. Rotate the speed control (large knob) to start the train. If the train runs backward, merely move the directional switch on the right of the power pack to the opposite side and the direction of travel of the train will reverse.

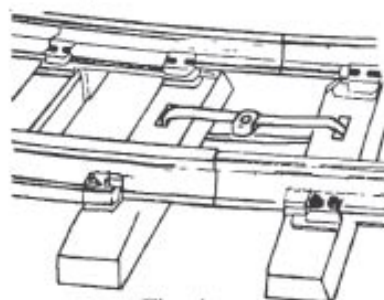


Fig. 4

At this time your train is operational. ~~We have prepared detailed instruction manuals for each of the operating components included in this set. These manuals are included here and we urge you to read them before operating the set.~~

NOTE:

Instructions from Starter Set Manuals. Some information may be only relevant to Starter Sets.

*See Instruction Manual for Power Pack (Power Supply or Controller) for proper connection locations and operation.