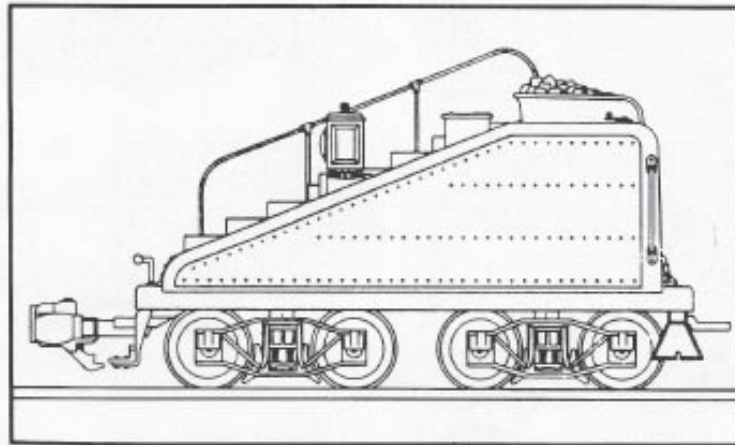


SLOPEBACK TENDER with Sound

INSTRUCTION MANUAL ART-21900-01



ARISTO-CRAFT TRAINS

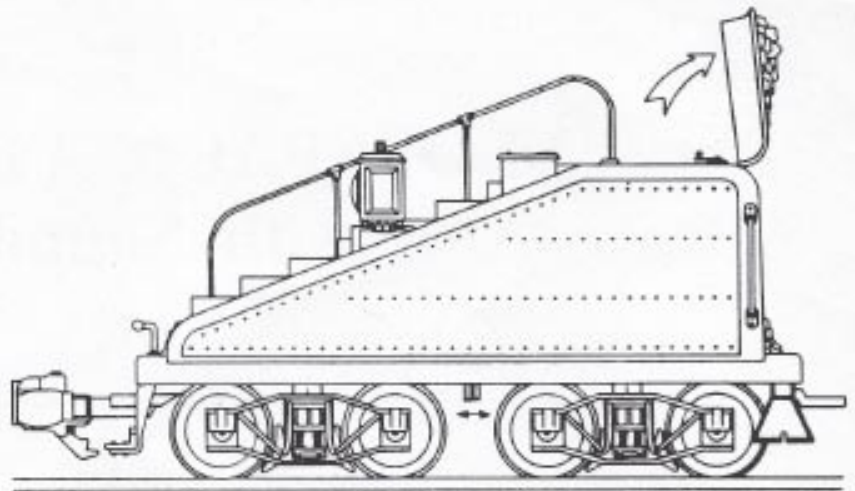
020193 REV

Page 1

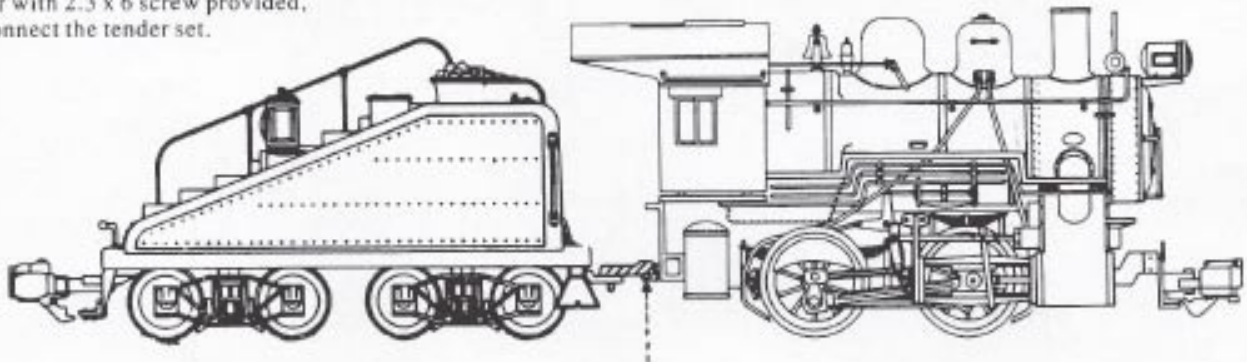
Push the cover forward and open the lid of the coal box as the arrow indicates.

The sound level can be adjusted by turning the volume knob.

Sound can be turned on/off by the switch underneath between trucks.



Remove the coupler on the locomotive and connect the tender connection coupler with 2.3 x 6 screw provided, then connect the tender set.



*Note: 0-4-0T Steam Locomotive shown, may also be used with 2-4-2 Rogers Steam Locomotive ART-21000/21100 series. Plastic flat floor "Extender" piece used only with ART-21000 series Rogers Steam Locomotive.

*Newer versions of 0-4-0 and 2-4-2 Rogers Steam Locomotives come with Art21900 Series Tender.

PULSE WIDTH CONTROL:

All ARISTO-CRAFT TRAINS locomotives, tenders, and operating railcars are designed to operate at proper capacity ONLY with ARISTO-CRAFT TRAINS Power Supply Units featuring "Pulse Width control" (P.W.C.).

P.W.C. allows a continuous voltage to flow to the motor and accessories such as headlight, interior lighting, smoke unit, and diesel or tender 'Electronic Sounds' during operation REGARDLESS of the speed OR direction of locomotive, tender, and/or railcars. In addition, the motor is supplied with a continuous voltage to allow smooth starting and stopping.

DO NOT CONFUSE PULSE WIDTH CONTROL with Pulse Power, a feature provided by some other (non-ARISTO-CRAFT TRAINS) power packs. It may seem that when operating with Pulse Power, the features on ARISTO-CRAFT TRAINS products are operating properly, but, in fact they ARE NOT. Sufficient voltage may not be available to activate the unit(s) and underload/overload damage to components may result.

Also, the TRAINS POWER PACK 7000 3.5 AMP FOR G AND HO manufactured by Polk's Modelcraft Hobbies under the Aristocraft Tradename DOES NOT HAVE P.W.C. To properly operate your #1 Gauge ARISTO-CRAFT TRAINS WITH P.W.C. use ARISTO-CRAFT TRAINS ART-5400 (1.8AMP) or ART-5450(4AMP) Power Supply Units.

If it is not possible to operate your #1 Gauge 1/29 Scale ARISTO-CRAFT TRAINS products with our P.W.C. equipped Power Supply, do not worry. Our Electrical Engineers have developed the ART-5401 CONTROL PACK ADAPTOR which can be easily attached to your present power supply, up to 5AMPS, of another manufacturer and allow PULSE WIDTH CONTROL to be applied to your Indoor/Outdoor model railroad. The ART-5401 is available from your local hobby shop or directly from Polk's.

****This product may be warranted for up to 5 years for manufacturer's defects**

SERVICE:

Should your ARISTO-CRAFT TRAINS model railroad product require warranty service, be sure to take the following steps to assure proper servicing:

1. Return product in ORIGINAL BOX, if not possible to use original box, pack product carefully in corrugated cardboard box, FULLY INSURED and PREPAID. ARISTO-CRAFT TRAINS will not be responsible for any damage or loss incurred during shipping.

2. Include a brief but thorough explanation of the problem(s) and the servicing that may be required.

3. Be sure to include your name, street address, city, state (or province), country (if outside U.S.A.), and postal zip code along with daytime phone number including Area Code, so that you may be contacted if it becomes necessary. All identification MUST be both - INSIDE package, enclosed in letter and - OUTSIDE package, on shipping container.

4. Include proper payment for shipping/handling -
Locomotive or Complete Train Set.....\$20.00 US
Accessoried, switch-track,
individual freight/passenger
railcars, or tender.....\$10.00US

Call for proper shipping/handling if outside continental US

- with check/Money Order payable in US dollars \$ to : Polk's Hobbies. Please DO NOT SEND CASH. If your item is out of warranty, you will be contacted with the proper amount of repair costs before repairs are started.

*** C.O.D. shipping NOT included, additional cost.***

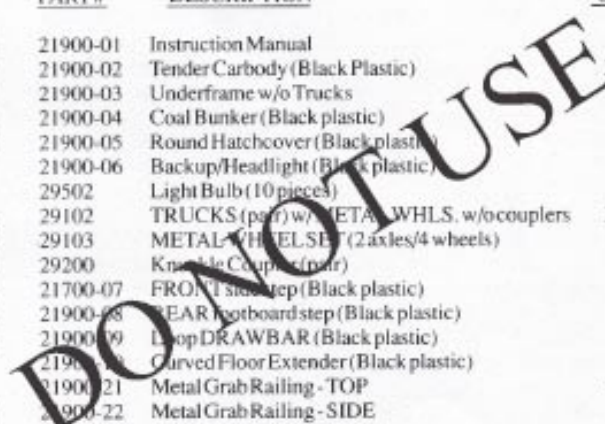
5. Ship your items(s) to:

Aristo-Craft Trains
698 South 21st St
Irvington, NJ 07111

Phone: 973-351-9800
Fax: 973-351-9700
email: aristo@mindspring.com

PARTS LISTING FOR ART-21900 series SLOPEBACK TENDER with SOUND, all railroad names (including UNDECORATED)-

PART#	DESCRIPTION	COST
21900-01	Instruction Manual	1.00
21900-02	Tender Carbody (Black Plastic)	10.00
21900-03	Underframe w/o Trucks	15.00
21900-04	Coal Bunker (Black plastic)	5.00
21900-05	Round Hatchcover (Black plastic)	2.00
21900-06	Backup/Headlight (Black plastic)	2.00
29502	Light Bulb (10 pieces)	7.95
29102	TRUCKS (pair) w/ METAL WHLS. w/o couplers	34.95
29103	METAL WHEELSET (2 axles/4 wheels)	5.95
29200	Knuckle Coupler (pair)	7.95
21700-07	FRONT side step (Black plastic)	1.00
21900-08	REAR footboard step (Black plastic)	3.00
21900-09	Drop DRAWBAR (Black plastic)	1.00
21900-10	Curved Floor Extender (Black plastic)	2.00
21900-21	Metal Grab Railing - TOP	10.00
21900-22	Metal Grab Railing - SIDE	2.00
21900-23	Metal Handle - TOP	2.00
21900-24	Metal Grab Railing - REAR	5.00
21900-25	Grab Railing POST	2.00



Additional parts available, contact ARISTO-CRAFT TRAINS Customer Service.

***Unpainted/Black plastic PART(S) will be substituted if Painted-to-match PART(S) ordered not available.

In addition to COST shown, please enclose...
\$3.50 shipping/handling* if PART Order less than \$10.00 or
\$5.00 shipping/handling* if PART Order \$10.00 and above.
*This is for PART Order only, not WARRANTY Order.

Refer to Exploded Parts Diagram/Parts Price List for Parts information.

Page 3

Note: Immediate written confirmation of receipt of returned item(s) will be sent along with estimated repair time by ARISTO-CRAFT TRAINS Service/Repair department.

