

ROGERS STEAM FREIGHT TRAIN SET

INSTRUCTION MANUAL

ART-28400 - 01

- ★ ROGERS STEAM LOCOMOTIVE
- ★ SLOPE BACK TENDER WITH SOUND
- ★ 20' 4-WHEEL GONDOLA
- ★ BOBBER CABOOSE
- ★ CURVED TRACK (12)
- ★ POWER PACK - 1.8 AMP DC
- ★ TRACK TO PACK CONNECTOR WIRE



ARISTO-CRAFT TRAINS

112598 NEW

ARISTO-CRAFT TRAINS

Dear Model Railroader,

This train set is highly detailed #1 Gauge 1/29th scale, and is suitable for both indoor and outdoor operation. It has been designed and manufactured to our usual high specifications. Please read this manual thoroughly before operation.

Should you have any questions regarding operation, proper usage or maintenance required on this or any other Aristo-Craft product, please do not hesitate to contact us at the following address:

ARISTO-CRAFT TRAINS / Polk's Modelcraft Hobbies, Inc.

Aristo-Craft Trains
698 South 21st Street
Irvington, NJ 07111

Phone: 973-351-9800
Fax: 973-351-9700
email: aristo@mindspring.com

Our customer service department phones are open from 10:00 AM to 5:00 PM Eastern time, Monday through Friday.

This set is extremely easy to set up and operate. After unpacking all of the components, follow these simple steps:

1. All ARISTO-CRAFT curved and straight track sections have four (4) screws in the bottom which secure the rail to the ties. In order to convert an ordinary section of track into a "Terminal Track" which conducts electric power to the rails, merely remove both screws at one end, insert the screws through the eyes of the TRACK TO PACK CONNECTOR WIRE and reattach the screws (See Fig. 1).
2. Join all twelve (12) curved track sections together (Fig. 2) to form a circle. If desired, each may be permanently attached to the adjoining section by inserting the small locking screw through the slot in the rail joiner into the hole in the rail and tightened (Fig. 3). These screws are stored underneath, in the hollow of one of the ties and encased in paraffin. If you do not wish to permanently join the track at this time, do not use the locking screws, but secure the sections together by using the provided plastic Tie Wraps. These Tie Wraps are inserted through the slot in the last tie and tightened. Please note that

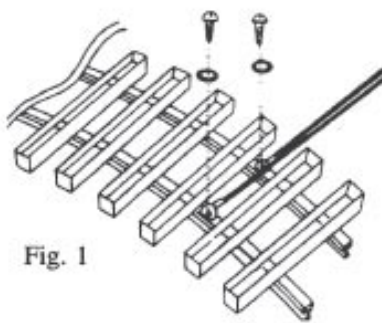


Fig. 1

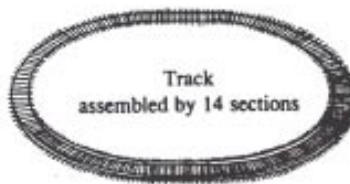


Fig. 2

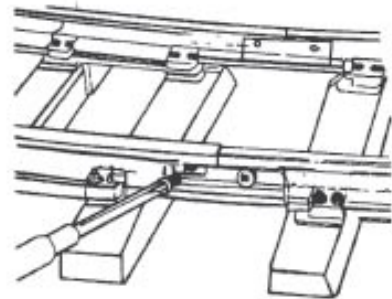


Fig. 3

there is a notch on the bottom of this tie into which the Tie Wrap lies so that the track will lie flat (Fig.4).

3. Connect the TRACK TO PACK CONNECTOR WIRE leads to the two (2) DC terminals at the back of the power pack by depressing the thumb tab at the bottom of the terminal and slipping the bare portion of the wire into the hole above the thumb tab. Insert one wire in each of the DC terminals. It does not matter which wire is connected to either terminal.
4. Place the locomotive and cars on the track and couple them together. Each of the knuckle couplers may be opened by pressing up on the small tab under the coupler. To lock the couplers, simply push them together.
5. Finally plug the power pack into any standard 120 V wall outlet. A green light will come on indicating that you have power. Rotate the speed control (large knob) to start the train. If the train runs backward, merely move the directional switch on the right of the power pack to the opposite side and the direction of travel of the train will reverse.

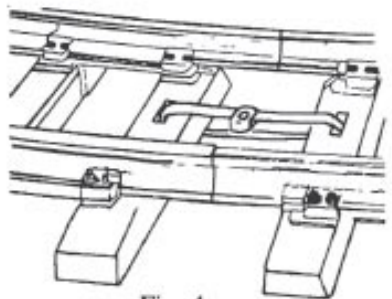


Fig. 4

At this time your train is operational. We have prepared detailed instruction manuals for each of the operating components included in this set. These manuals are included here and we urge you to read them before operating the set.

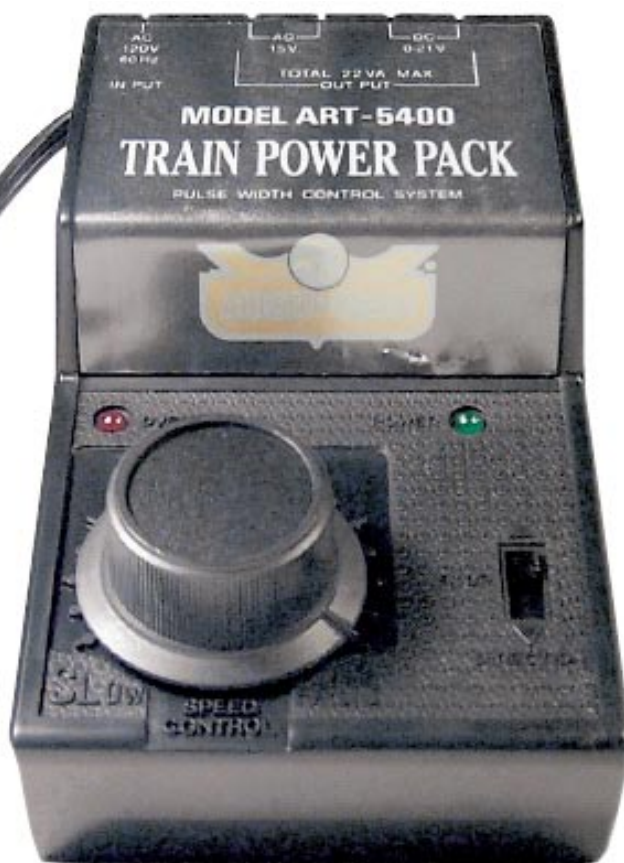
CRE-55400/ART5400 MODEL TRAIN POWER PACK INSTRUCTION MANUAL

FEATURES:

- CONSTANT VOLTAGE PULSE WIDTH SPEED CONTROL

Conventional train power packs control speed by varying the input voltage but this causes the lights to dim and lower the sound level when the train is operated at slow speed. Also, dirty track can interfere with the operation of the train at slow speed due to reduced voltage. Pulse Width Control (P.W.C.) allows double features by separating the control of the train from the voltage. A high DC voltage is constantly fed to the tracks, but the speed of the train is regulated by a signal message sent along the tracks to the motor. The higher, constant DC voltage means that the lighting, smoke and electronic sound features work much better, even when the train is at a full stop.

NOTE: PULSE WIDTH CONTROL (P.W.C.) IS NOT PULSE POWER. SEE THE INSTRUCTION MANUAL FOR YOUR SOUND SYSTEM REGARDING COMPATIBILITY ISSUES WHEN USED WITH P.W.C.



- AUTOMATIC ELECTRONIC MOMENTUM

This power pack provides a realistic momentum which starts and stops the trains without the use of AC voltage pulses that are harmful to DC motors. There is a momentary delay between the increase of the throttle and the movement of the train. There is also a delay in stopping as well.

- AUTOMATIC CIRCUIT PROTECTION

If there is a short circuit in the tracks or an overload in the power supply, the components of the CRE-55400/ART-5400 are protected by a circuit breaker and the unit will not be damaged. If there is a short circuit or overload, the overload indicator lamp will light.

- THREE POSITION DIRECTION SWITCH

This switch features forward (upward position), stop (middle position) and reverse (down position). The stop position stops the train, there may still be voltage applied to the rails powering lights and accessories.

- L.E.D. INDICATORS

L.E.D. lights indicate whether or not the power is on and if there is an overload. The power light indicates if the power supply is receiving power and is on regardless if the three position switch is set in the stop position.

INSTALLATION & OPERATION

WITH THE POWER PACK UNPLUGGED:

- Place the direction switch on "stop" and the speed control switch at "slow".
- Connect the track power leads to the two red terminals (DC) on the back of the power pack by depressing the thumb tab at the bottom of the terminal and slipping the bare portion of the wire into the hole above. Place one wire in each of the DC (red) terminals and connect the opposite ends of the wires to the track (see figure 1). It does not matter which wire is connected to either terminal

-CAUTION

Do not try to force the wire into the terminal and insert only the end of the bare portion. Do not put the insulated part of the wire into the terminal.

NEVER connect the track to the black (Accessory) terminals of the power pack as this will damage your equipment.

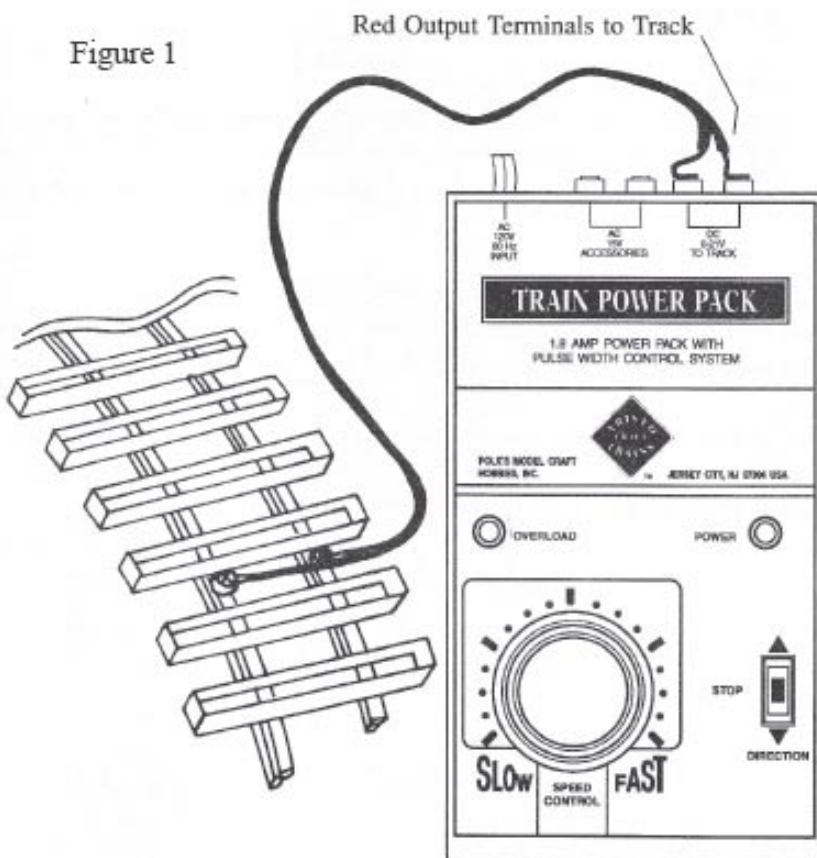
PLUG THE POWER PACK INTO A STANDARD 120V WALL OUTLET

- A green light will come on indicating that you have power
- Rotate the speed control to the right to start the train.
- If the train runs backwards, simply move the direction switch to the opposite position and the train will change direction.

TROUBLE SHOOTING

- If the power light (green) does not light, check to see if the 120V outlet plug is properly connected.
- If the power light is on but the train does not move, check the connection between the tracks and the red terminals.
- If the overload light (red) is flickering, unplug the power supply and:
 - Check all wire connections
 - See if any metal object is on the track causing a short circuit.
 - Check the train for possible short circuit.
 - Check to see if any other power source is inadvertently connected.

Figure 1



CAUTION - ELECTRICALLY OPERATED PRODUCT

Not recommended for children under eight (8) years of age. As with all electric products precaution should be observed during the handling and use of this unit to prevent electric shock.

It is recommended that parents periodically examine the power pack, cords and wires for damage which could result in the risk of fire, electric shock or injury to a person. In the event of such conditions, the power pack should not be used until properly repaired.

SERVICING

Should your ARISTO-CRAFT TRAINS product require warranty service, please return it in the original box, if possible, protected by a proper shipping carton. Send the product fully insured and prepaid. ARISTO-CRAFT TRAINS will not be responsible for any loss or damage incurred during shipping. Be sure to include a brief, but thorough explanation of the problem, together with your name, street address (no Post Office box please), city state or province and country, if outside of the United States. Also include a daytime telephone number so that we may contact you if necessary. Your return address should be clearly marked on the outside of the shipping carton.

Payment for shipping and handling, in U.S. funds, is \$20.00 and should be included. Your check or money order should be made payable to: Polk's Modelcraft Hobbies, Inc. Do not send cash. If your item is not covered by warranty service, you will be contacted and a repair estimate given before any work commences. Warranty covers manufacturer defects, not normal wear and tear.

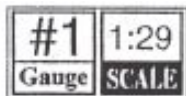
The shipping address to be used for returns is as follows:

Aristo-Craft Trains
Repairs Department
698 South 21st St
Irvington, NJ 07111

Phone: 973-351-9800
Fax: 973-351-9700
email: aristo@mindspring.com

Written confirmation of receipt of returned items will be sent with estimated repair time by the ARISTO-CRAFT TRAINS Customer Service Department.

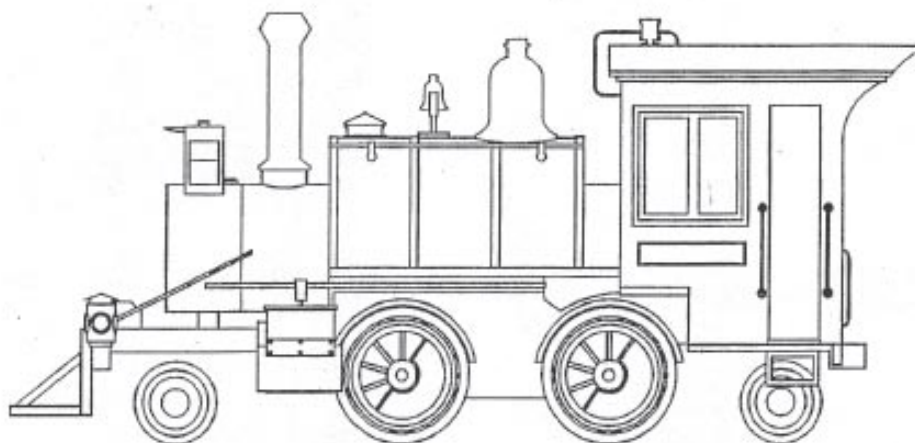
Call for proper shipping/handling if outside continental US



ROGERS 2-4-2 STEAM LOCOMOTIVE

INSTRUCTION MANUAL

ART-21000 - 01



ARISTO-CRAFT TRAINS

121597 NEW

Dear Model Railroader,

This item, the Rogers 2-4-2 Steam Locomotive, is a highly detailed #1 Gauge, 1/29 scale unit and is suitable for both indoor and outdoor operation. It is patterned after an engine constructed by the Rogers Locomotive Works, of Paterson, New Jersey, prior to 1900. The model closely follows the unique character of the prototype and features such fine details as solid brass handrails and grab irons, movable bell, cab detailing, working interior and exterior lights and a functioning smoke unit.

There are a number of features included in the Rogers, many of them working. Some of these features are:

- ★ Smoke Unit
- ★ Solid State Circuitry
- ★ Realistic Knuckle Couplers
- ★ Fully Sprung Lead and Trailing Trucks
- ★ Working Interior and Exterior Lights

Should you have any questions regarding operation, proper usage or maintenance required on this or any other Aristo-Craft product, please do not hesitate to contact us at the following address:

ARISTO-CRAFT TRAINS / Polk's Modelcraft Hobbies, Inc.

Aristo-Craft Trains
698 South 21st Street
Irvington, NJ 07111

Phone: 973-351-9800
Fax: 973-351-9700
email: aristo@mindspring.com

Our customer service department phones are open from 10:00 AM to 5:00 PM Eastern time, Monday through Friday.

LEADING AND TRAILING TRUCK SPRINGS AND BEARINGS

The leading and trailing trucks on this model have springs just like the prototype. They have springs for equalization and act as shock absorbers to cushion the ride. (Fig. 1)

The truck bearings are designed to operate with little or no lubrication. If lubrication is absolutely necessary, use only a very small amount of a dry lubricant such as powdered graphite or Teflon applied to the ends of the axles where they enter the bearings (Fig. 1).

COUPLERS

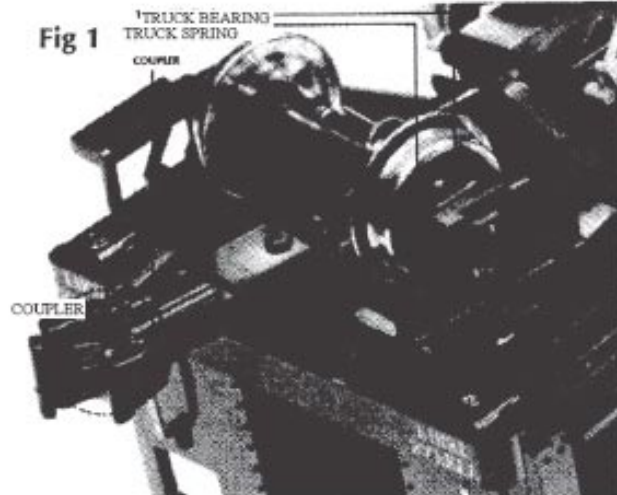
This locomotive does not have a coupler on the rear, but is equipped with a draw bar as there is a tender attached. If it is desired that the locomotive operate without the tender, an Aristo-Craft Knuckle Coupler (ART-29200) may be substituted. This is easily done by unscrewing the single screw holding the draw bar to the truck and attaching the knuckle coupler using the same screw.

rag may be used to effectively clean the wheels.

Pressing against the backs of the wheels are small spring loaded carbon brushes which transfer the electric current from the wheels to the lights and motors. After prolonged operation it may be necessary to replace these brushes which is accomplished by the following instructions.

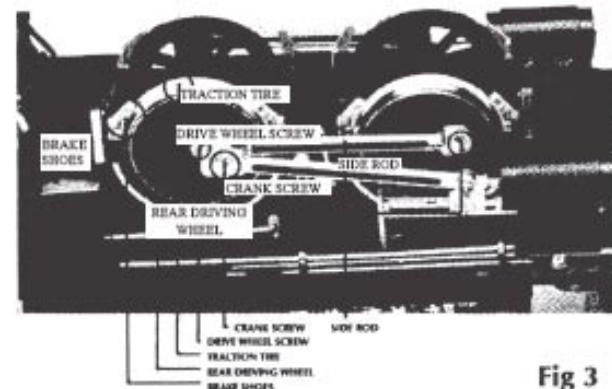
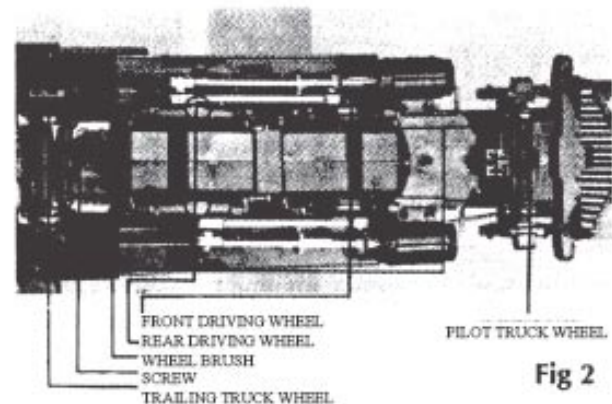
A) Leading and Trailing Trucks: Using a small Phillips screwdriver, remove the small screw that fastens the plastic brush holder to the truck frame. Remove the old brushes and replace them with new ones. Remember that these brushes are spring loaded. Reinstall the brush holder by reversing the above process. Be careful not to break the connections of the wires.

B) Driving Wheels: To replace the brushes on the driving wheels, it is first necessary to swing the brake shoes out of the way as shown in Fig. 3. Then, remove the side rods by removing the crank and the drive wheel screws (Fig. 3). Gently pull the drive wheel off of the axle, remembering that the brushes are spring loaded and may fly out if care is not exercised. Insert the new brushes and



ELECTRICAL PICKUP

The wheels of this locomotive are designed for electrical power pickup and have been plated for good conductivity. After extended periods of operation, however, they will become dirty and will require cleaning in order to maintain good electrical contact. Aristo-Craft Smoke Fluid / Track Cleaner (ART-29601) applied with a clean



springs and reassemble by reversing the above procedure.

TRACTION TIRES

The two rear driving wheels of this locomotive are equipped with traction tires to enhance the pulling power. These should be periodically checked for wear and replaced if necessary. To replace the traction tires, remove the drive wheel as outlined above. Remove the old tire by inserting a small, thin screwdriver under it and pull up and off. Now install the new traction tire and reattach the drive wheel.

DRIVE TRAIN

This locomotive is equipped with a unique drive mechanism designed to give greater pulling capacity and efficiency, even on rough or irregular track. Each pair of driving wheels has its own motor, gear train and sealed gear box. The gear boxes have been factory lubricated which should last indefinitely.

If it does become necessary to disassemble a sealed gear box, these steps should be followed:
A) Unscrew and remove the end retainer plates as

shown in Fig. 4.

B) Unscrew the connecting spacer (Fig. 4).

C) Slide the gear box out of the chassis until the power leads are exposed.

D) Disconnect the power leads.

E) Remove the driving wheels as outlined above.

F) The gear box is now free of the chassis and may be removed.

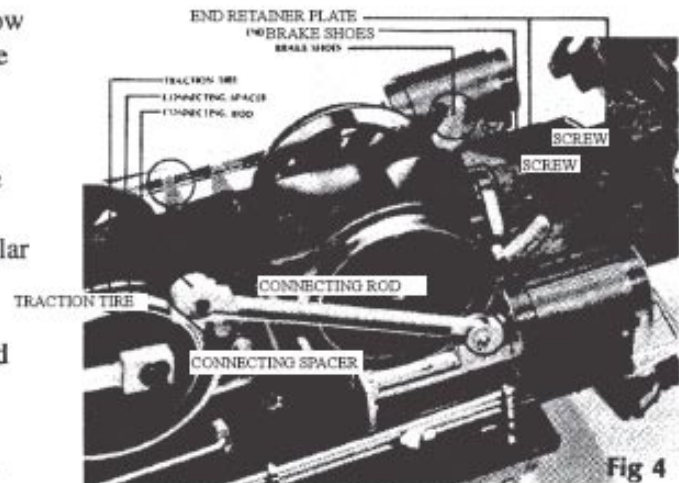


Fig 4

Under normal usage, lubrication of the driving axles should not be required. However, if it does become necessary to lubricate the item, it is not necessary to dismantle the locomotive. Merely turn the locomotive upside down and place one drop of Aristo-Lube Oil (ART-29603) on each axle between the wheel and the side of the gear box. After oiling the axles, run the locomotive for about ten minutes to allow the lubricant to work in.

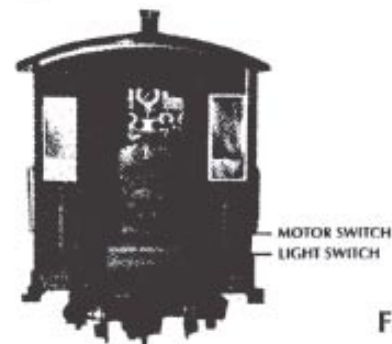


Fig 5

MOTOR, LIGHT AND SMOKE SWITCHES

The motor, lights and smoke units on this locomotive can be controlled (turned on and off) independently by using the three switches installed for this purpose. The motor and light switches are located on the fire box door inside the cab and the smoke unit switch is located inside of the round door in front of the boiler.

★ Motor Switch (up-on, down-off) – Located on the right side of the fire box door. (fig. 5)

★ Light Switch (up-on, down-off) – Located on the left side of the fire box door. (Fig. 5)

★ Smoke Switch (right-on, left-off) – Located inside of the round door in front of the boiler. (Fig. 6)

SMOKE GENERATOR

This locomotive is equipped with a smoke generating smoke stack which produces a burst of smoke with each stroke of the piston. To operate this feature the stack must be filled with Aristo-Craft Smoke Fluid, ART-29601. Do not over fill. Use only 6 or 7 drops of fluid, poured down the opening in the center of the stack. Turn the smoke generator switch to the right or "on" position. This switch is located behind the round smoke box door in the front of the locomotive. This door may be opened by rotating the latch on the upper left of the door counter clock wise (Fig. 6). Never let the smoke unit run dry as it may cause it to burn out. If the locomotive stops smoking, stop and turn the switch to the "off" position unless the smoke fluid is refilled.

Should it ever become necessary to replace the smoke unit, simply pull up and unplug the stack and plug in a new stack. When installing the new stack, align the small port (the off center hole) in the base of the stack with the metal exhaust tube that protrudes from the smoke box (Fig. 7).

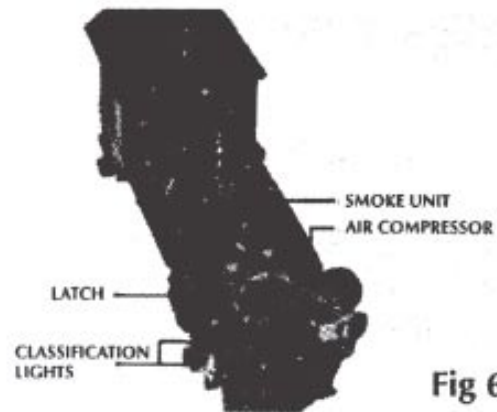


Fig 6



Fig 7

Please note that this smoke unit will only work efficiently with full power to the track. We recommend the use of Aristo-Craft power packs equipped with "Pulse Width Control" (PWC). This is not pulse power. PWC keeps maximum current on the rails at all times, allowing track powered accessories to operate to their best degree.

LIGHT BULB REPLACEMENT

The bulb in the headlight can be replaced by first unscrewing the headlight housing and then the bulb. (Fig. 8). To replace the bulb in the cab, merely reach in and unscrew. The classification lights on the pilot beam are illuminated by light emitting diodes (LED's) and should last indefinitely.

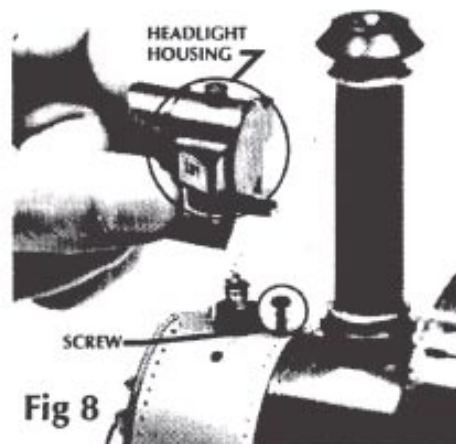
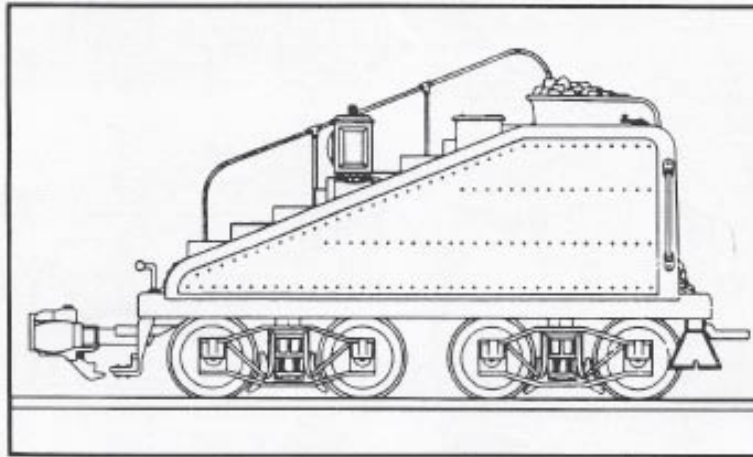


Fig 8

SLOPEBACK TENDER with Sound

INSTRUCTION MANUAL ART-21900-01



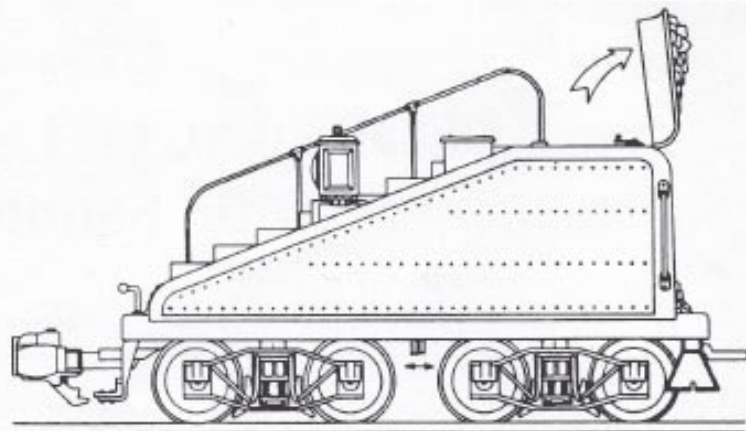
ARISTO-CRAFT TRAINS

020193 REV

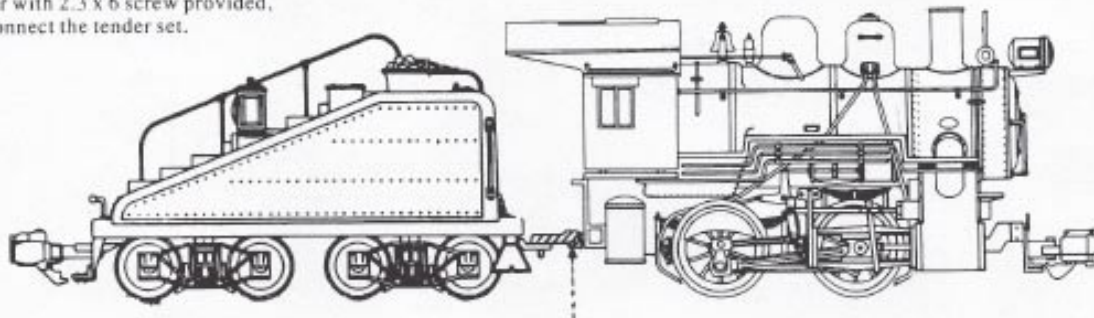
Push the cover forward and open the lid of the coal box as the arrow indicates.

The sound level can be adjusted by turning the volume knob.

Sound can be turned on/off by the switch underneath between trucks.



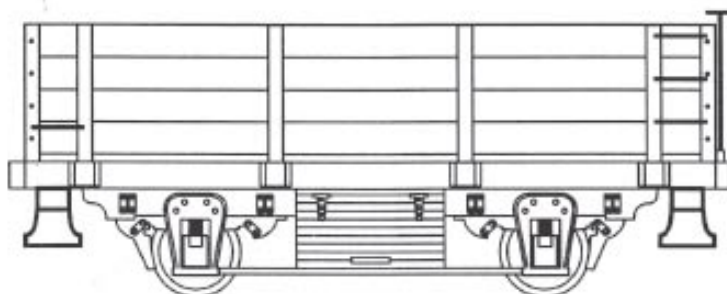
Remove the coupler on the locomotive and connect the tender connection coupler with 2.3 x 6 screw provided, then connect the tender set.



NOTE: 0-4-0T Steam Locomotive Shown.

20 ft. 2-Axle GONDOLA

INSTRUCTION MANUAL ART-42000 - 01



ARISTO-CRAFT TRAINS

052397 NEW

UNDERFRAME

The side frames are molded of a thermal plastic which faithfully reproduces all of the details for these and the journal boxes.

The suspension on this model is designed exactly like a prototype 4 wheel freight car and uses springs in each journal for equalization and to act as shock absorbers to cushion the ride.

COUPLERS

This freight car is equipped with prototypically accurate, operating knuckle couplers. They may be operated manually by pressing upward on the small tab below each coupler assembly. Automatic uncoupling may be accomplished by using an LGB designed uncoupling device (*LGB is a trademark of the E.P. Lehman Company, Germany*).

These knuckle couplers may not operate automatically when attempting to couple

ARISTO-CRAFT TRAINS products to knuckle couplers used by other model railroad manufacturers. Couplers may have to be joined by lifting one closed coupler and inserting it into the closed knuckle of the ARISTO-CRAFT TRAINS coupler.

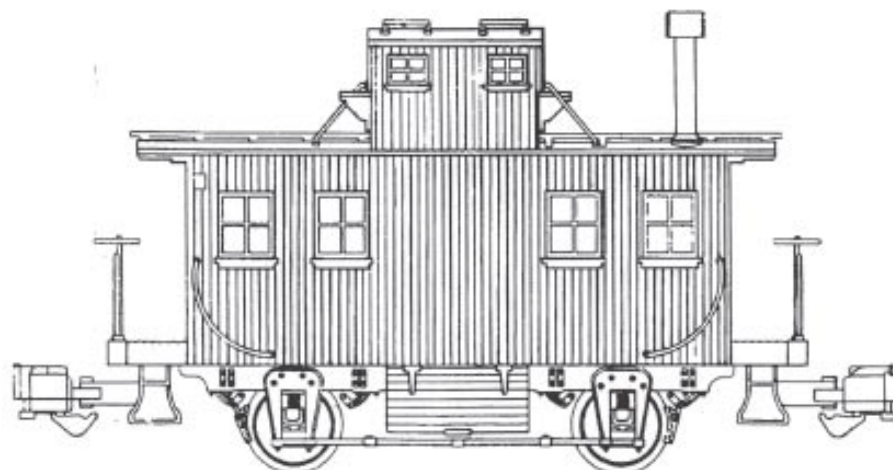
Loop style couplers are enclosed for those who wish to install and use them. Make the conversion by removing the single screw that holds the knuckle coupler to the underframe and attaching the loop style couplers with the same screw.



BOBBER CABOOSE

INSTRUCTION MANUAL

ART-28300 - 01



ARISTO-CRAFT TRAINS

052397 NEW

The **BOBBER CABOOSE** is based upon a 4-wheel Wooden Caboose of the mid-1800's to early 1900's era. Actual prototype examples of this type caboose are on display at various Railroad Museums in North America.

WORKING FEATURES: Operating AAR-design knuckle couplers. Detailed caboose underframe with sprung axles.

EXTERIOR DETAILS: Simulated Brass-color plastic Grab Railings. Simulated WOOD-GRAIN sides, ends, and walkways. Full Underframe. Clear Plastic Windows with brightwork trim. The axles/wheelsets on this model are designed exactly like the prototype **BOBBER CABOOSE**, and uses springs for equalization to act as a shock absorber and cushion the ride.

UNDERFRAME: The underframe unit is molded of a thermal plastic which reproduces all side and journal box detailing.

COUPLERS

This caboose is equipped with prototypically accurate, operating knuckle couplers. They may be operated manually by pressing upward on the small tab below each coupler assembly. Automatic uncoupling may be accomplished by using an LGB designed uncoupling device (*LGB is a trademark of the E.P. Lehman Company, Germany*).

These knuckle couplers may not operate automatically when attempting to couple **ARISTO-CRAFT TRAINS** products to knuckle couplers used by other model railroad manufacturers. Couplers may have to be joined by lifting one closed coupler and inserting it into the closed knuckle of the **ARISTO-CRAFT TRAINS** coupler.

Loop style couplers are enclosed for those who wish to install and use them. Make the

conversion by removing the single screw that holds the knuckle coupler to the underframe and attaching the loop style couplers with the same screw.

LIMITED WARRANTY

16. Your new ARISTO-CRAFT TRAINS product is warranted for 180 days from DATE OF PURCHASE against defects in workmanship and/or materials. Proof of purchase MAY be required by ARISTO-CRAFT TRAINS.

16A. This warranty is VOID and does not apply to any product and/or parts and components which have been improperly installed by purchaser/owner, abused or damaged in any way through improper operation such as train derailment, modified, or repaired by unauthorized service centers and/or non-factory authorized technicians.

SERVICE:

17. Should your ARISTO-CRAFT TRAINS model railroad product require warranty service, be sure to take the following steps to assure proper servicing.

17A. Return product with foam insert in ORIGINAL Black BOX, AND pack product carefully in (another) corrugated cardboard box, FULLY INSURED and PREPAID. ARISTO-CRAFT TRAINS will not be responsible for any damage or loss incurred during return for servicing.

17B. DO NOT SHIP PRODUCT ONLY in Black ARISTO-CRAFT TRAINS box with shipping label. This WILL NOT protect product during shipping and CUSTOMER is liable for damage to product.

17C. Include a brief but thorough explanation of the problem(s) and the servicing that may be required.

17D. Be sure to include your name, street address, city, state (or province), country (if outside U.S.A.), and postal zipcode along with daytime phone number, including Area Code, so that you may be contacted if it becomes necessary. All identification MUST be both – INSIDE package, contained in letter and – OUTSIDE package, on shipping container.

17E. Include proper payment for shipping/handling –

Locomotive or Complete Train Set\$20.00 US
Accessories, switch-track
individual freight cars, passenger
railcars, tender, or Buildings\$10.00 US

– with check (written on your USA Bank Account)/Money Order payable in US Dollars (\$) to: Polk's Hobbies. Please *DO NOT SEND CASH*. If your returned item is out of warranty, you will be contacted with proper amount of repair costs before repairs are started.

*****C.O.D. shipping NOT included, additional cost.*****

17F. Ship your item(s) to:

Aristo-Craft Trains
698 South 21st St
Irvington, NJ 07111

Phone: 973-351-9800

Fax: 973-351-9700

email: aristo@mindspring.com

17G. Immediate written confirmation of receipt of returned item(s) will be sent along with estimated repair time by ARISTO-CRAFT TRAINS Service/Repair Department.