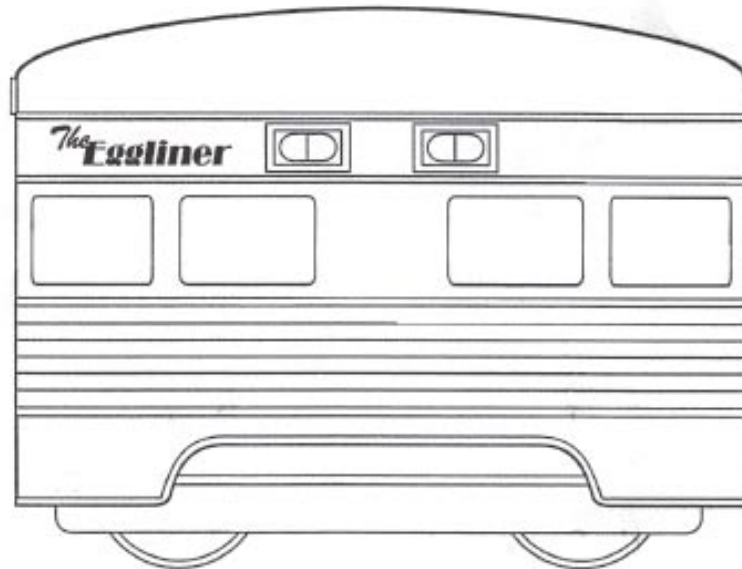


# ART-28600 SERIES EGGLINER SET

- EGGLINER LOCOMOTIVE
- 4 FOOT DIAMETER TRACK
- 5400 MODEL TRAIN POWER PACK



Dear Model Railroader,

This train set is highly detailed #1 Gauge 1/29<sup>th</sup> scale, and is suitable for both indoor and outdoor operation. It has been designed and manufactured to our usual high specifications. Please read this manual thoroughly before operation.

Should you have any questions regarding operation, proper usage or maintenance required on this or any other Aristo-Craft product, please do not hesitate to contact us at the following address:

**ARISTO-CRAFT TRAINS / Polk's Modelcraft Hobbies, Inc.**

Aristo-Craft Trains  
698 South 21st Street  
Irvington, NJ 07111

Phone: 973-351-9800  
Fax: 973-351-9700  
email: [aristo@mindspring.com](mailto:aristo@mindspring.com)

Our customer service department phones are open from 10:00 AM to 5:00 PM Eastern time, Monday through Friday.

This set is extremely easy to set up and operate. After unpacking all of the components, follow these simple steps:

1. All ARISTO-CRAFT curved and straight track sections have four (4) screws in the bottom which secure the rail to the ties. In order to convert an ordinary section of track into a "Terminal Track" which conducts electric power to the rails, merely remove both screws at one end, insert the screws through the eyes of the TRACK TO PACK CONNECTOR WIRE and reattach the screws (See Fig. 1).
2. Join all twelve (12) curved track sections together (Fig. 2) to form a circle. If desired, each may be permanently attached to the adjoining section by inserting the small locking screw through the slot in the rail joiner into the hole in the rail and tightened (Fig. 3). These screws are stored underneath, in the hollow of one of the ties and encased in paraffin. If you do not wish to permanently join the track at this time, do not use the locking screws, but secure the sections together by using the provided plastic Tie Wraps. These Tie Wraps are inserted through the slot in the last tie and tightened. Please note that

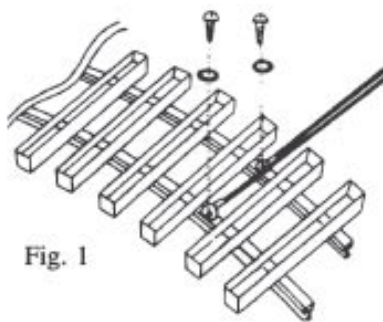


Fig. 1



Fig. 2

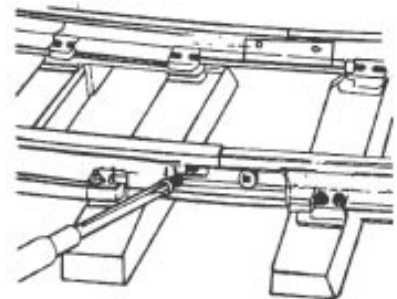


Fig. 3

there is a notch on the bottom of this tie into which the Tie Wrap lies so that the track will lie flat (Fig.4).

3. Connect the TRACK TO PACK CONNECTOR WIRE leads to the two (2) DC terminals at the back of the power pack by depressing the thumb tab at the bottom of the terminal and slipping the bare portion of the wire into the hole above the thumb tab. Insert one wire in each of the DC terminals. It does not matter which wire is connected to either terminal.
4. Place the locomotive and cars on the track and couple them together. Each of the knuckle couplers may be opened by pressing up on the small tab under the coupler. To lock the couplers, simply push them together.
5. Finally plug the power pack into any standard 120 V wall outlet. A green light will come on indicating that you have power. Rotate the speed control (large knob) to start the train. If the train runs backward, merely move the directional switch on the right of the power pack to the opposite side and the direction of travel of the train will reverse.

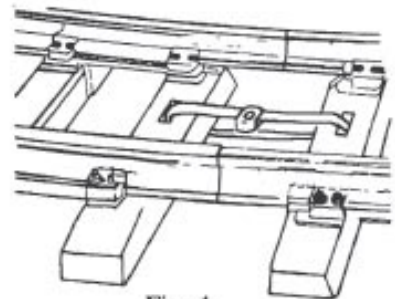


Fig. 4

At this time your train is operational. We have prepared detailed instruction manuals for each of the operating components included in this set. These manuals are included here and we urge you to read them before operating the set.



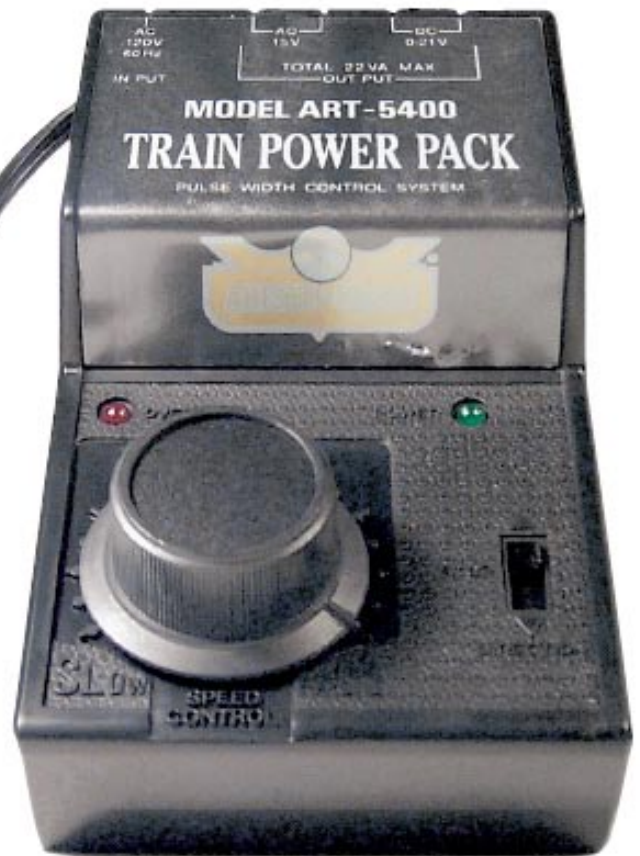
# CRE-55400/ART5400 MODEL TRAIN POWER PACK INSTRUCTION MANUAL

## FEATURES:

### - CONSTANT VOLTAGE PULSE WIDTH SPEED CONTROL

Conventional train power packs control speed by varying the input voltage but this causes the lights to dim and lower the sound level when the train is operated at slow speed. Also, dirty track can interfere with the operation of the train at slow speed due to reduced voltage. **Pulse Width Control (P.W.C.)** allows double features by separating the control of the train from the voltage. A high DC voltage is constantly fed to the tracks, but the speed of the train is regulated by a signal message sent along the tracks to the motor. The higher, constant DC voltage means that the lighting, smoke and electronic sound features work much better, even when the train is at a full stop.

**NOTE: PULSE WIDTH CONTROL (P.W.C.) IS NOT PULSE POWER. SEE THE INSTRUCTION MANUAL FOR YOUR SOUND SYSTEM REGARDING COMPATIBILITY ISSUES WHEN USED WITH P.W.C.**



### - AUTOMATIC ELECTRONIC MOMENTUM

This power pack provides a realistic momentum which starts and stops the trains without the use of AC voltage pulses that are harmful to DC motors. There is a momentary delay between the increase of the throttle and the movement of the train. There is also a delay in stopping as well.

### - AUTOMATIC CIRCUIT PROTECTION

If there is a short circuit in the tracks or an overload in the power supply, the components of the CRE-55400/ART-5400 are protected by a circuit breaker and the unit will not be damaged. If there is a short circuit or overload, the overload indicator lamp will light.

### - THREE POSITION DIRECTION SWITCH

This switch features forward (upward position), stop (middle position) and reverse (down position). The stop position stops the train, there may still be voltage applied to the rails powering lights and accessories.

### -L.E.D. INDICATORS

L.E.D. lights indicate whether or not the power is on and if there is an overload. The power light indicates if the power supply is receiving power and is on regardless if the three position switch is set in the stop position.

## INSTALLATION & OPERATION

### WITH THE POWER PACK UNPLUGGED:

- Place the direction switch on "stop" and the speed control switch at "slow".
- Connect the track power leads to the two red terminals (DC) on the back of the power pack by depressing the thumb tab at the bottom of the terminal and slipping the bare portion of the wire into the hole above. Place one wire in each of the DC (red) terminals and connect the opposite ends of the wires to the track (see figure 1). It does not matter which wire is connected to either terminal

### -CAUTION

Do not try to force the wire into the terminal and insert only the end of the bar portion. Do not put the insulated part of the wire into the terminal.

**NEVER** connect the track to the black (Accessory) terminals of the power pack as this will damage your equipment.

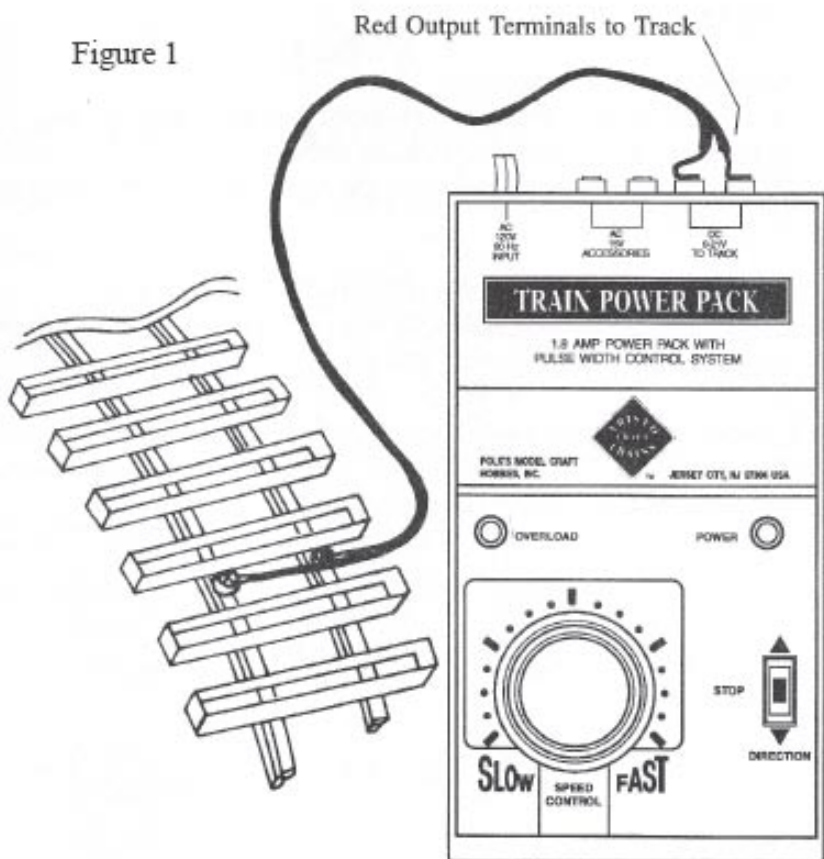


## PLUG THE POWER PACK INTO A STANDARD 120V WALL OUTLET

- A green light will come on indicating that you have power
- Rotate the speed control to the right to start the train.
- If the train runs backwards, simply move the direction switch to the opposite position and the train will change direction.

## TROUBLE SHOOTING

- If the power light (green) does not light, check to see if the 120V outlet plug is properly connected.
- If the power light is on but the train does not move, check the connection between the tracks and the red terminals.
- If the overload light (red) is flickering, unplug the power supply and:
  - Check all wire connections
  - See if any metal object is on the track causing a short circuit.
  - Check the train for possible short circuit.
  - Check to see if any other power source is inadvertently connected.



## CAUTION - ELECTRICALLY OPERATED PRODUCT

Not recommended for children under eight (8) years of age. As with all electric products precaution should be observed during the handling and use of this unit to prevent electric shock.

It is recommended that parents periodically examine the power pack, cords and wires for damage which could result in the risk of fire, electric shock or injury to a person. In the event of such conditions, the power pack should not be used until properly repaired.

## SERVICING

Should your ARISTO-CRAFT TRAINS product require warranty service, please return it in the original box, if possible, protected by a proper shipping carton. Send the product fully insured and prepaid. ARISTO-CRAFT TRAINS will not be responsible for any loss or damage incurred during shipping. Be sure to include a brief, but thorough explanation of the problem, together with your name, street address (no Post Office box please), city state or province and country, if outside of the United States. Also include a daytime telephone number so that we may contact you if necessary. Your return address should be clearly marked on the outside of the shipping carton.

Payment for shipping and handling, in U.S. funds, is \$20.00 and should be included. Your check or money order should be made payable to: Polk's Modelcraft Hobbies, Inc. Do not send cash. If your item is not covered by warranty service, you will be contacted and a repair estimate given before any work commences. Warranty covers manufacturer defects, not normal wear and tear.

The shipping address to be used for returns is as follows:

Aristo-Craft Trains  
Repairs Department  
698 South 21st St  
Irvington, NJ 07111

Phone: 973-351-9800  
Fax: 973-351-9700  
email: aristo@mindspring.com

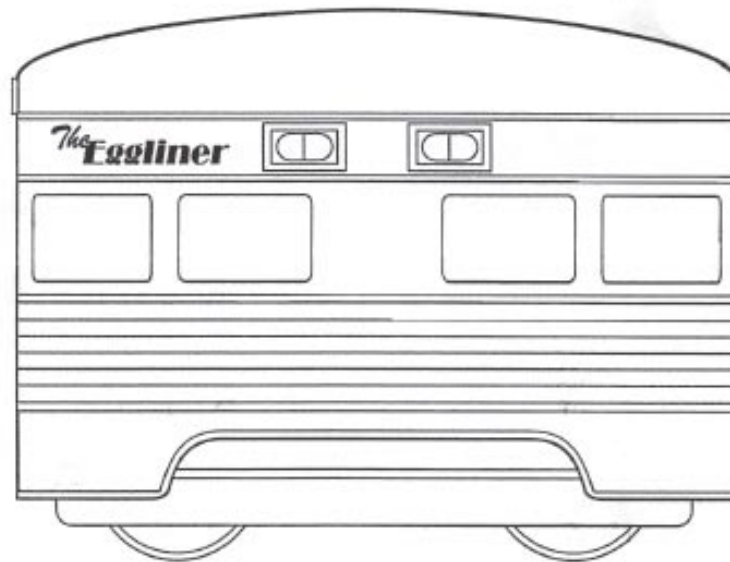
Written confirmation of receipt of returned items will be sent with estimated repair time by the ARISTO-CRAFT TRAINS Customer Service Department.

Call for proper shipping/handling if outside continental US

# EGGLINER LOCOMOTIVE

INSTRUCTIONS

ART-22700-01



**The Eggliner locomotive is a whimsical creation intended for those with a sense of humor and who just want to have fun running trains. It is, though, a precision made product, having the following features which make it look and operate in a superior manner:**

- |  |                                      |
|--|--------------------------------------|
| ★ Modular body and power unit assembly | ★ Crisp painting and lettering       |
| ★ Front and Rear lighting              | ★ Computer lathe turned metal wheels |
| ★ Front and rear AAR knuckle couplers  | ★ Ball bearing drive                 |

## **Cleaning the Wheels**

Over a period of time the wheels may require cleaning as dirty wheels lead to sporadic electrical pick up or other problems. To clean the wheels, remove the locomotive from the track and turn it upside down to expose the wheels. Use Aristo-Craft Smoke Fluid / Track Cleaner, ART-29601, applied with a clean, soft rag to wipe away the accumulated dirt and grease. Do not use abrasives as the resulting grit may enter the motor and gearing and cause operational problems.

## **Lubrication**

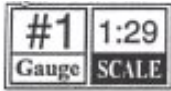
After prolonged usage, it may be necessary to add a drop of oil to the axles at the ball bearings. Turn the unit upside down, and using a needle point oiler, place a drop of oil on each axle where it emerges from the gear box. Be sure that the oil used is plastic compatible.

It should not be necessary to open the gear box and apply grease to the gears. The gear box has been lubricated at the factory with a new, high-tech lubricant, which, under normal operating conditions should last indefinitely, eliminating the need for periodic gear box maintenance.

## **Couplers**

This unit is equipped with prototypically accurate, operating knuckle couplers which are factory installed on both ends. They may be manually operated by pressing upward on the small tab below each coupler. Automatic uncoupling may be accomplished by using an LGB designed uncoupling device (*LGB is a trademark of the E.P. Lehman Company, Germany*).





# EGGLINER LOCOMOTIVE

INSTRUCTIONS

ART-22700-01



## Limited Warranty

All Aristo-Craft Trains products are under warranty for five (5) years from the date of purchase, against defects in workmanship and / or materials. Proof of purchase *may be required* by Aristo-Craft Trains.

This warranty is void and does not apply to any product and / or parts and components which have been improperly installed by the purchaser owner, abused or damaged in any way through improper operation, such as, but not limited to derailment, repairs or modifications performed by non-authorized service centers or technicians.

## Servicing

Should your Eggliner require warranty service, please return it in the original package, if possible, protected by a proper shipping carton, insured and prepaid. Aristo-Craft Trains will not be responsible for any loss or damage incurred during shipping. Be sure to include a brief, but thorough explanation of the problem, together with your name, street address (no Post Office box please), city, state (or province) and country if you live outside of the USA. Also include a daytime telephone number so that we may contact you if necessary. Your return address should be clearly marked on the outside of the carton.

\*Please ~~include \$10.00~~ in U.S. funds for shipping and handling, with your check or money order made payable to: Polk's Model Craft Hobbies, Inc. Do not send cash. If your problem is not covered by warranty service, you will be contacted and a repair estimate given before any work commences. Our shipping address is as follows:

ARISTO-CRAFT TRAINS  
698 SOUTH 21ST STREET  
IRVINGTON, NJ 07111

PHONE: 973-351-9800  
FAX: 973-351-9700  
EMAIL: [aristo@mindspring.com](mailto:aristo@mindspring.com)  
[www.aristocraft.com](http://www.aristocraft.com)

Our customer service department phones are open from 10:00 AM to 5:00 PM Eastern time, Monday through Friday.

\* Call for Current Shipping and Handling charges.

## LIMITED WARRANTY

All ARISTO-CRAFT TRAINS products are under warranty for five (5) years from the date of purchase against defects in workmanship and/or materials. Proof of purchase *may be required* by ARISTO-CRAFT TRAINS.

This warranty is void and does not apply to any product and/or parts and components which have been improperly installed by the purchaser/owner, abused or damaged in any way through improper operation such as but not limited to derailment, repairs or modifications performed by non-authorized service centers or technicians.

## SERVICING

Should your ARISTO-CRAFT TRAINS product require warranty service, please return it in the original box, if possible, protected by a proper shipping carton. Send the product fully insured and prepaid. ARISTO-CRAFT TRAINS will not be responsible for any loss or damage incurred during shipping. Be sure to include a brief, but thorough explanation of the problem, together with your name, street address (no Post Office box please), city state or province and country, if outside of the United States. Also include a daytime telephone number so that we may contact you if necessary. Your return address should be clearly marked on the outside of the shipping carton.

The proper payment for shipping and handling, in U.S. funds, should also be included as follows:

Locomotive or complete train set	\$20.00
Accessories, switches, track, freight or passenger cars, rail cars, tenders, etc.	\$10.00

**CALL FOR CURRENT SHIPPING COSTS**

Your check or money order should be made payable to: Polk's Modelcraft Hobbies, Inc. Do not send cash. If your item is not covered by warranty service, you will be contacted and a repair estimate given before any work commences.

The shipping address to be used for returns is as follows:

ARISTO-CRAFT TRAINS / Polk's Modelcraft Hobbies, Inc.

Customer Service Department

698 SOUTH 21ST STREET

IRVINGTON, NJ 07111

TEL: 973-351-9800

FAX: 973-351-9700

email: [aristo@mindspring.com](mailto:aristo@mindspring.com)

Written confirmation of receipt of returned items will be sent with estimated repair time by the ARISTO-CRAFT TRAINS Customer Service Department.