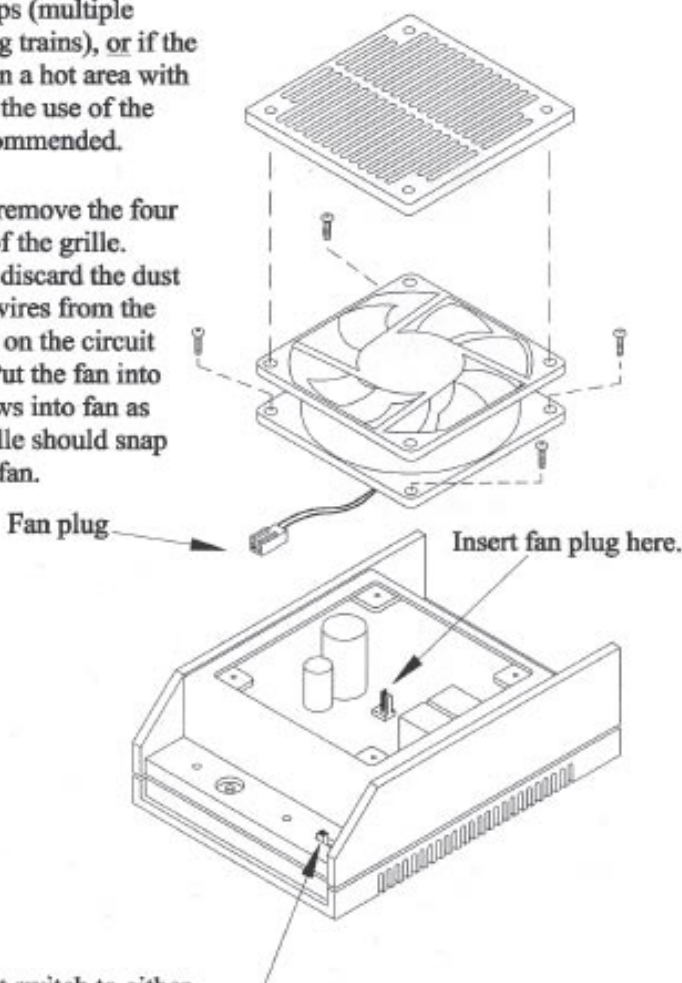


## CRE-55499 COOLING FAN

If track current is going to be more than 5 amps (multiple locomotives or long trains), or if the receiver is placed in a hot area with restricted air flow, the use of the optional fan is recommended.

To install the fan, remove the four screws in the top of the grille. Then, remove and discard the dust shield. Hook the wires from the fan into the socket on the circuit board as shown. Put the fan into place and put screws into fan as indicated. The grille should snap into the top of the fan.



Set switch to either Linear or P.W.C. Please note that P.W.C. should not be used with non Aristo-Craft locomotives or sound systems. The Linear mode should be used with all non Aristo-Craft locomotives and sound systems. Linear is nothing more than DC current.

## ATTACHING THE MODULAR PLUG

- 1) Trim the plug wires to a length of 2".
- 2) Trim the fan wires to a length of 2", measured from the notch in the bottom of the fan housing.
- 3) Strip approximately 3/8" of insulation from the end of each of the 4 wires.
- 4) Slip a length of shrink tubing over each of the wires on the fan.
- 5) Twist the red wire on the plug to the blue wire on the fan and the solder them together.
- 6) Twist the black wire on the plug to the red wire on the fan and solder them together.
- 7) Be sure to follow the color combinations indicated in Steps 5 and 6 above. The fan motor is polarity sensitive and will not operate if the wires are not properly joined.
- 8) Slip the shrink tubing over the wire joints and set them in place by using a heat gun, a hair direr on the highest setting or even the soldering iron held just below the tubing.

CREST HOBBY ELECTRONICS/POLK'S MODEL CRAFT HOBBIES  
698 SOUTH 21ST STREET  
IRVINGTON, NJ 07111 USA  
TEL: (973)-351-9800 FAX (973)-351-9700  
WEB SITE: [www.aristocraft.com](http://www.aristocraft.com) E-MAIL: [aristo@mindspring.com](mailto:aristo@mindspring.com)